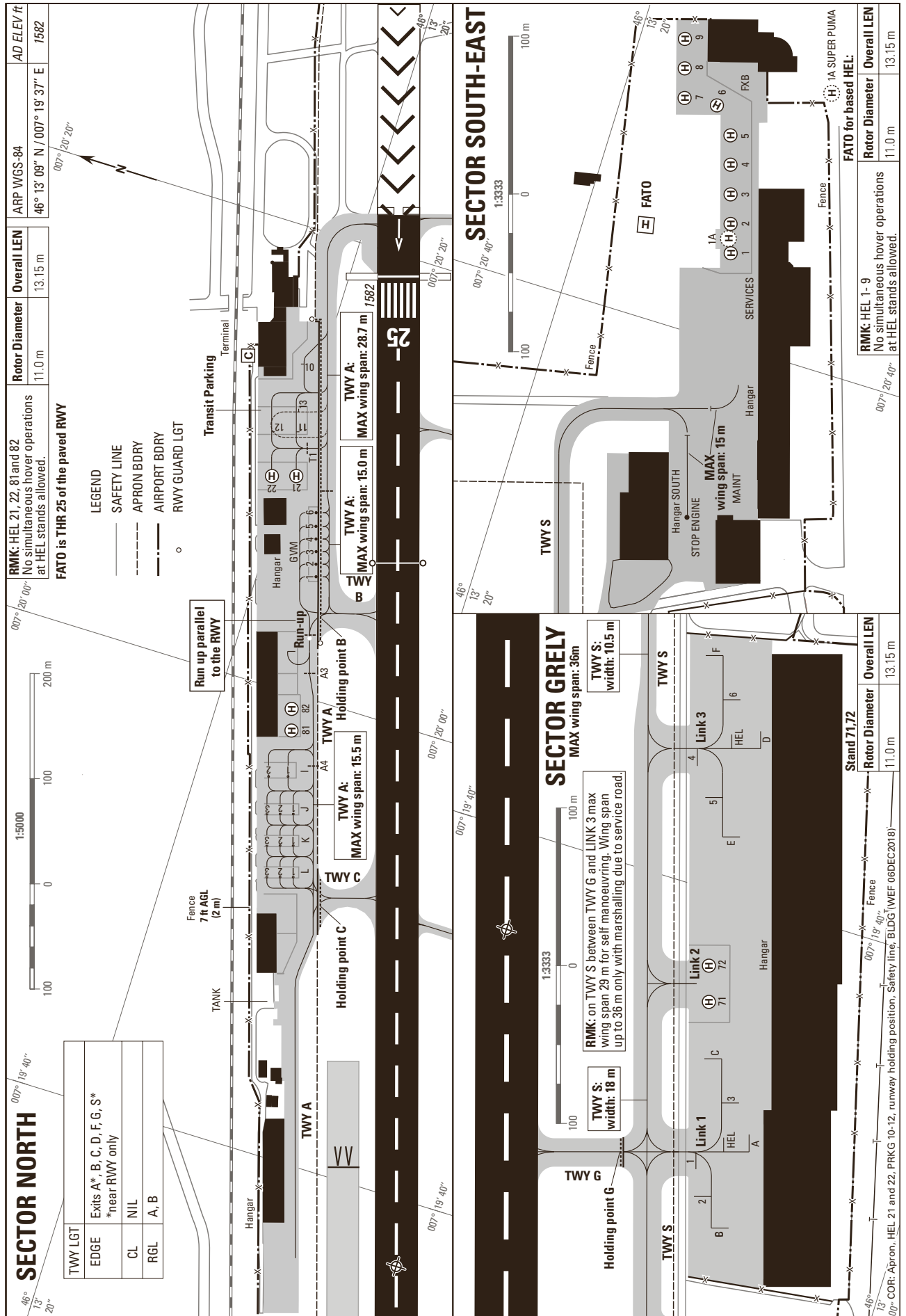


THIS PAGE INTENTIONALLY LEFT BLANK

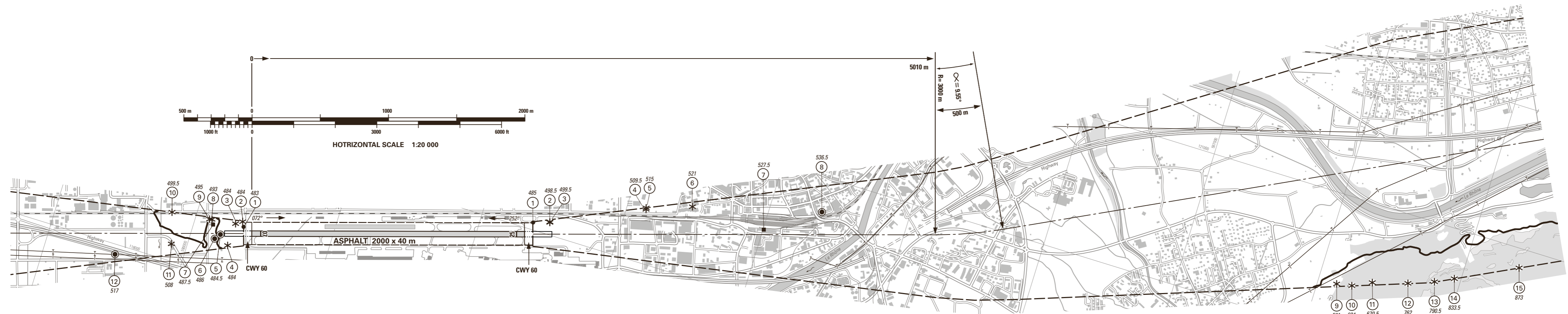


THIS PAGE INTENTIONALLY LEFT BLANK

VAR 1° E (2011)

Profile view see LSGS AD 2.24.4-2

RWY: 07-25		
RWY 07	DECLARED DISTANCES in m	RWY 25
2000	TAKE-OFF RUN AVAILABLE	2000
2060	TAKE-OFF DISTANCE AVAILABLE	2060
2000	ACCELERATE STOP DISTANCE AVAILABLE	2000
1935	LANDING DISTANCE AVAILABLE	1940



AMDT RECORD		
No.	DATE	ENTERED BY

LEGEND	
①	Identification number
*	Tree, shrub
●	Pole, tower, spire, antenna, etc.
■	Building, large structure
•	Enclosure
—	Transmission line, overhead cable
⌒	Terrain penetrating obstacle plane

COR: OBST ELEV (WEF 25APR2019)

OBST ELEV in m
AD ELEV in m

ORDER OF ACCURACY ACCORDING TO ICAO REQUIREMENTS

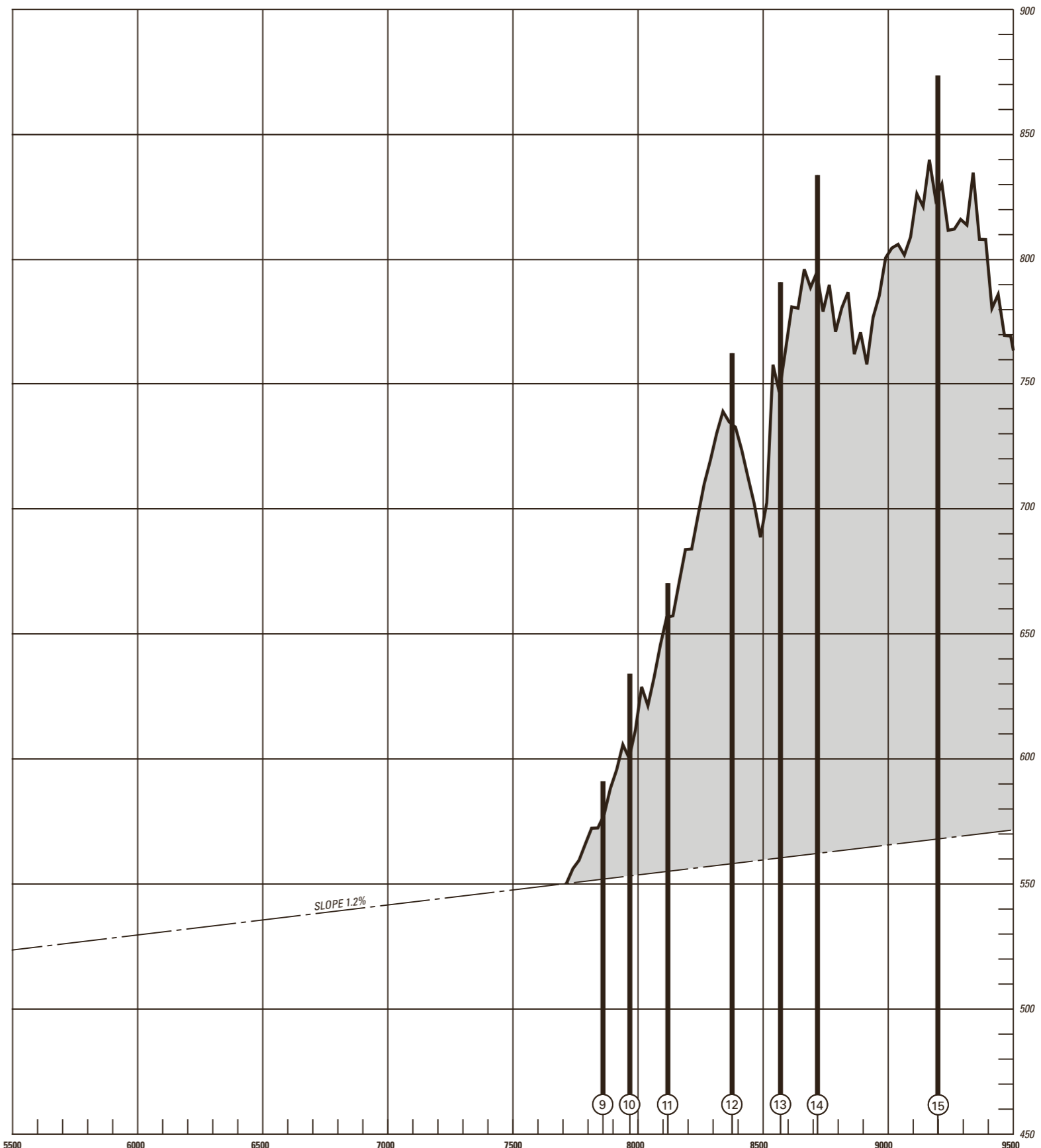
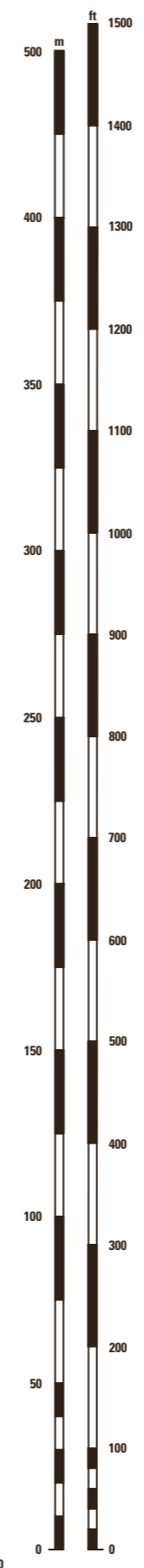
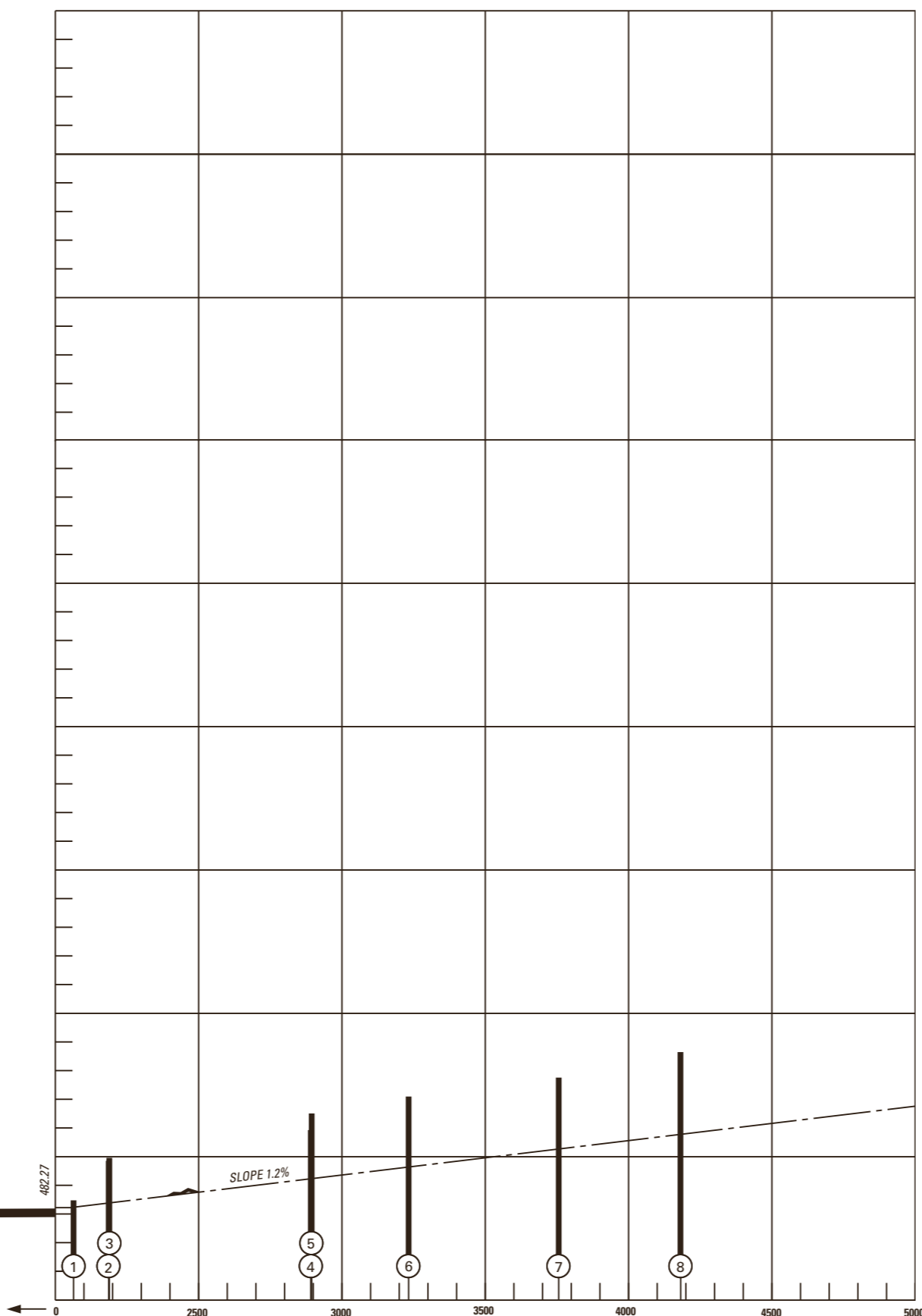
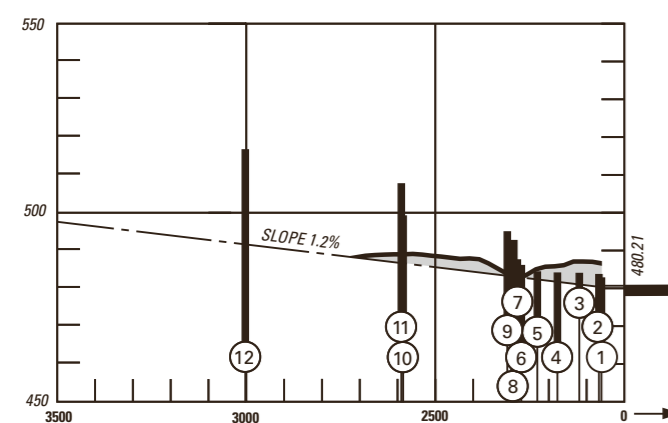
13th Edition

© 2019 Swisstopo, CH-3084 Wabern

PROFILE RWY: 07-25

- ① Identification number
- ⌒ Terrain penetrating obstacle plane

Plan view see LSGS AD 2.24.4-1



COR: OBST ELEV (WEF 25APR2019)

12th Edition

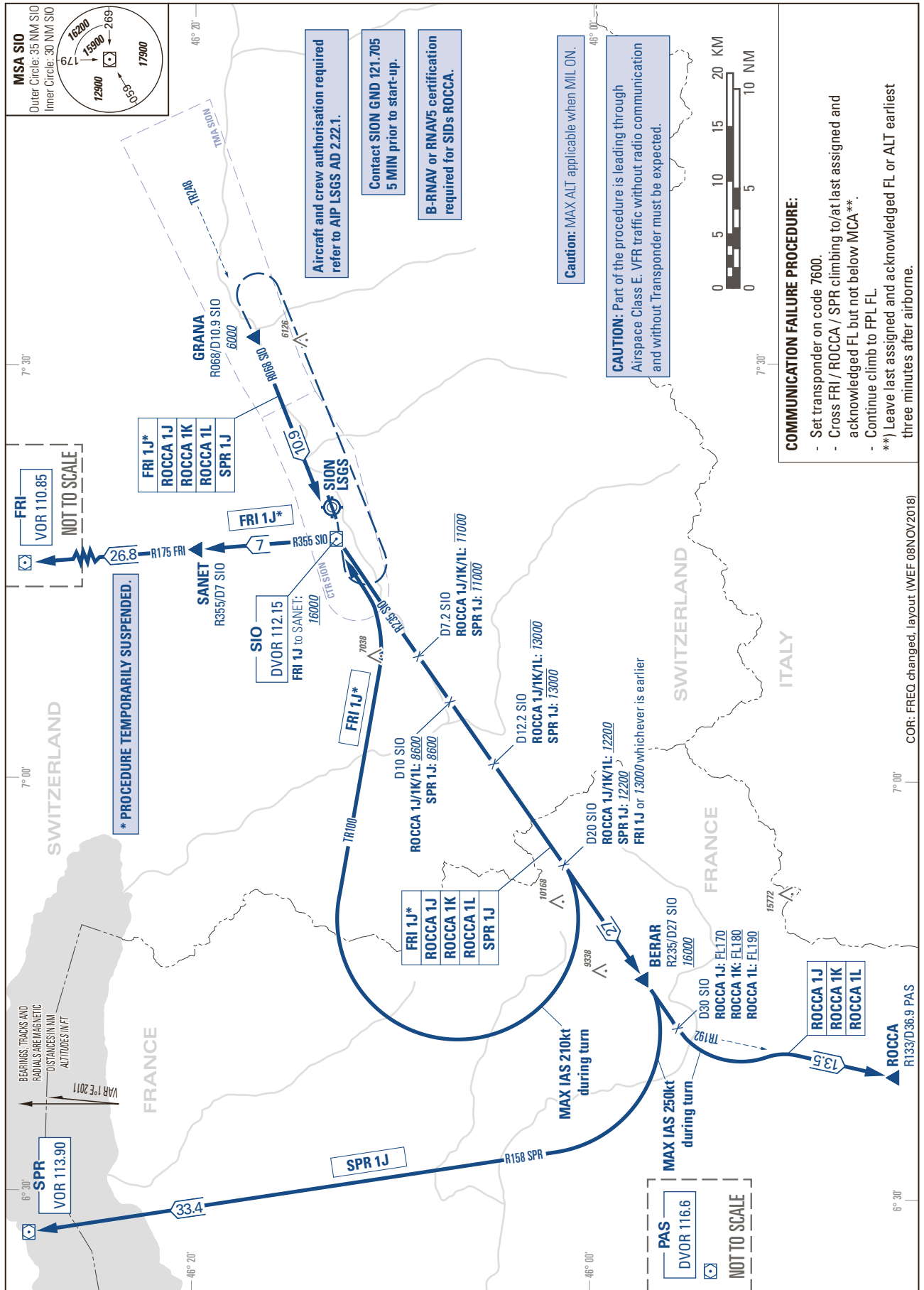
VERTICAL SCALE
1 : 2000

© 2019 Swisstopo. CH-3084 Wabern

STANDARD INSTRUMENT DEPARTURE CHART (SID) - ICAO

TRANSITION LEVEL by ATC
TRANSITION ALTITUDE 17000

SION LSGS
SID RWY 07/25

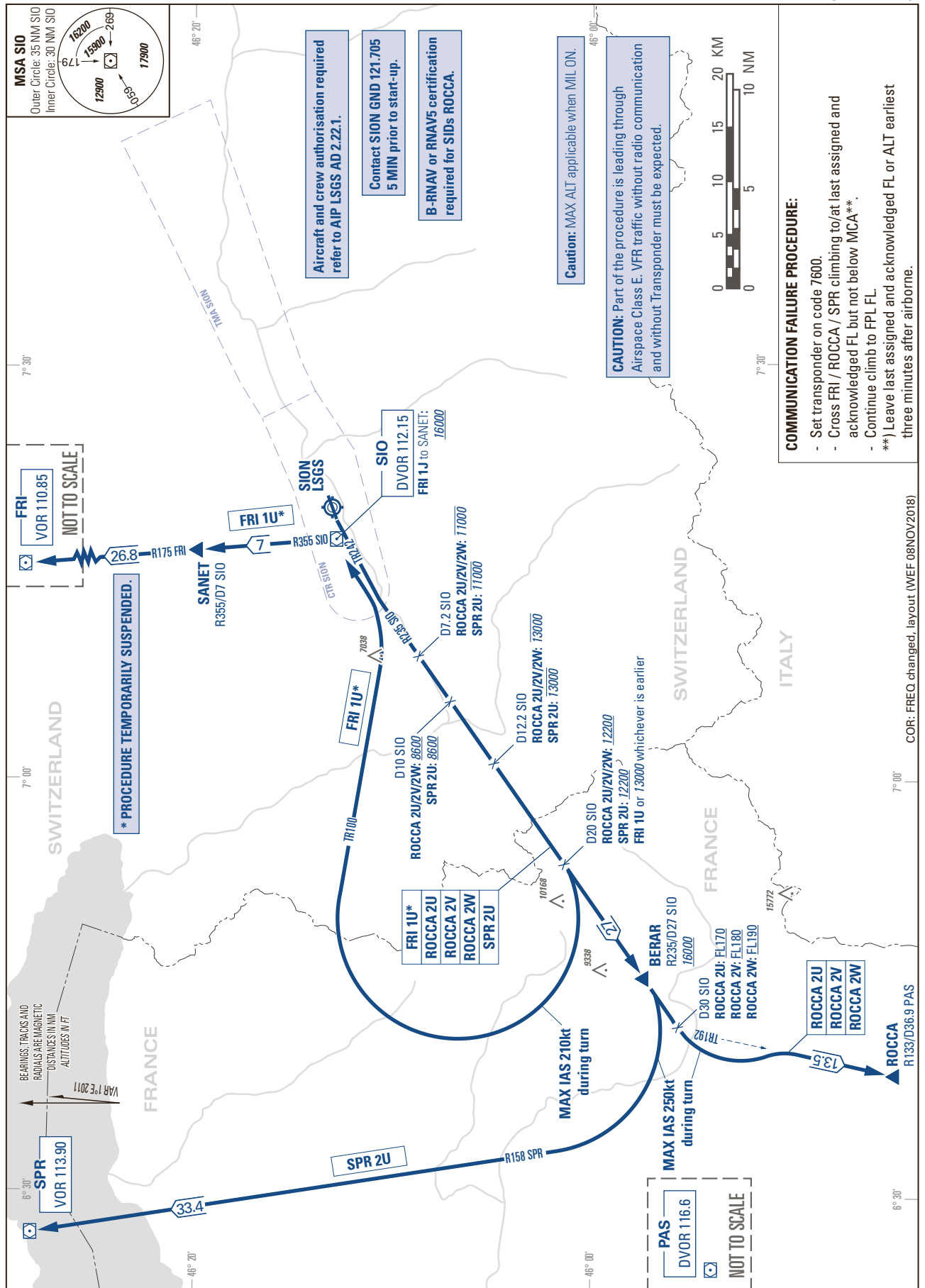


THIS PAGE INTENTIONALLY LEFT BLANK

STANDARD INSTRUMENT DEPARTURE CHART
(SID) - ICAO

TRANSITION LEVEL by ATC
TRANSITION ALTITUDE 17000

SION LSGS
HIGH PERFORMANCE
SID RWY 25

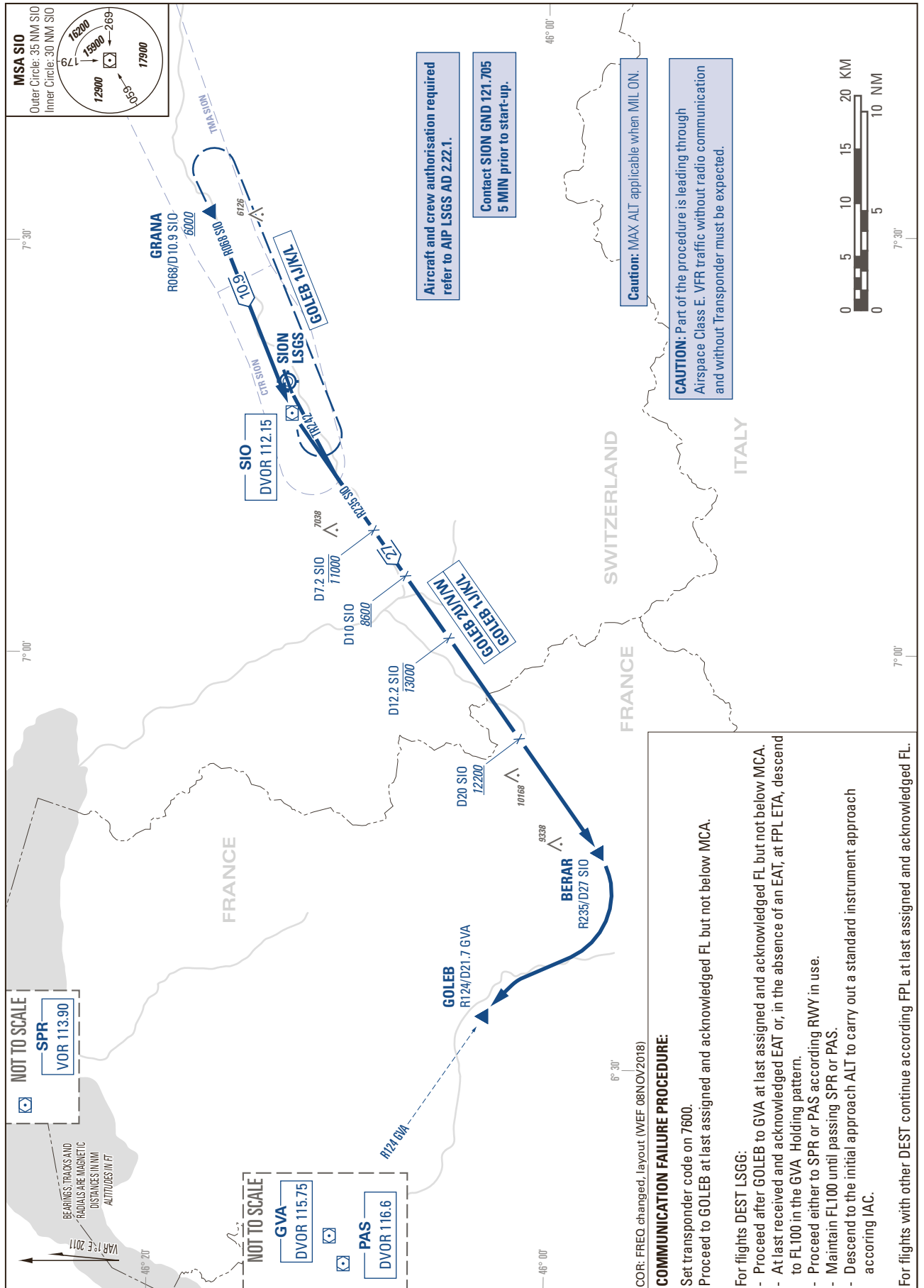


THIS PAGE INTENTIONALLY LEFT BLANK

STANDARD INSTRUMENT DEPARTURE CHART (SID) - ICAO

TRANSITION LEVEL by ATC
TRANSITION ALTITUDE 13000

SION LSGS
SID RWY 07/25 ONLY FOR DEST
WITHINTMA LSGG OR LFLB

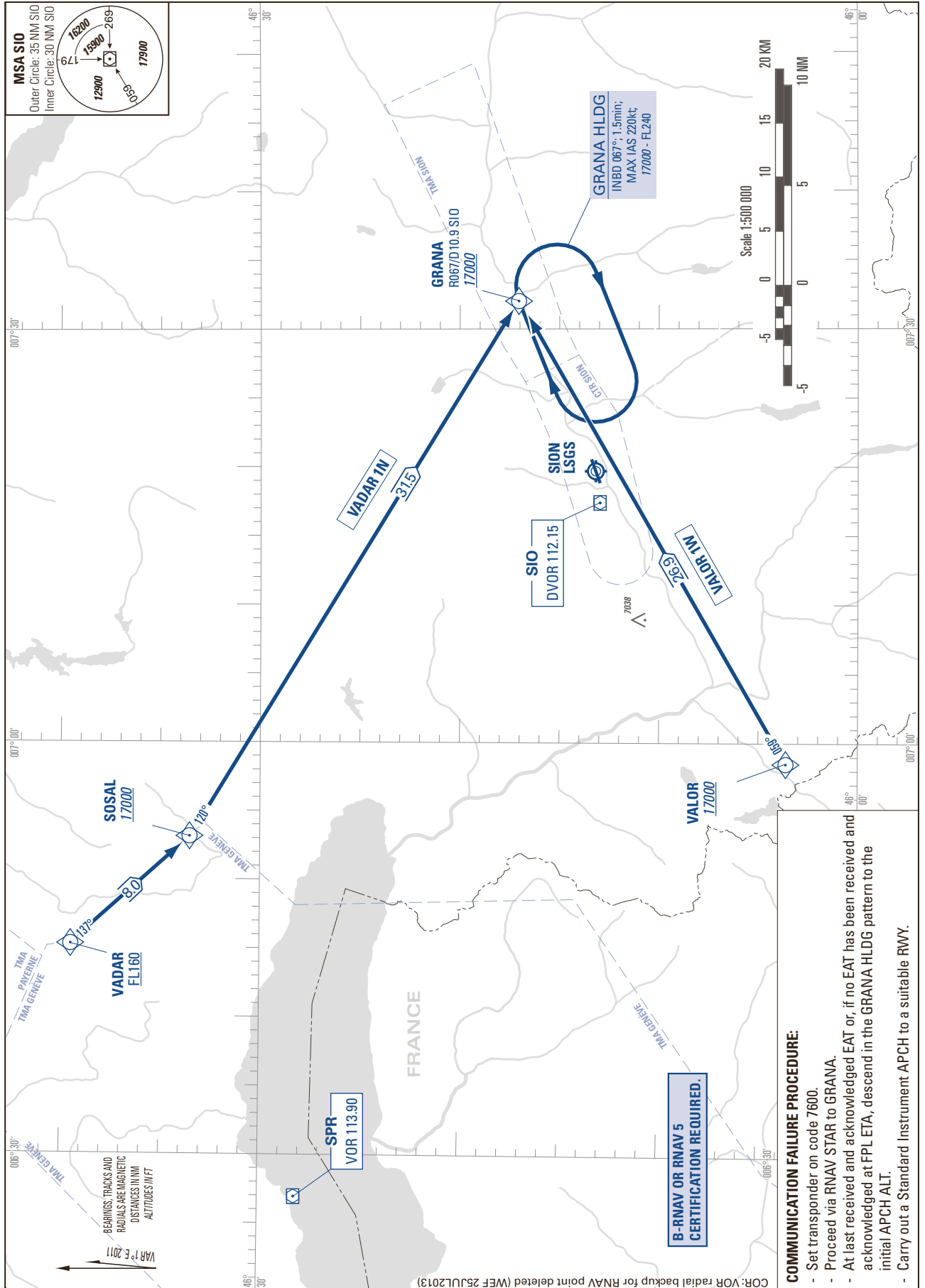


THIS PAGE INTENTIONALLY LEFT BLANK

STANDARD INSTRUMENT ARRIVAL CHART
(STAR) - ICAO

TRANSITION LEVEL by ATC
TRANSITION ALTITUDE 17000

SION LSGS
STARTO GRANA - RNAV 5
(DME/DME or GNSS)



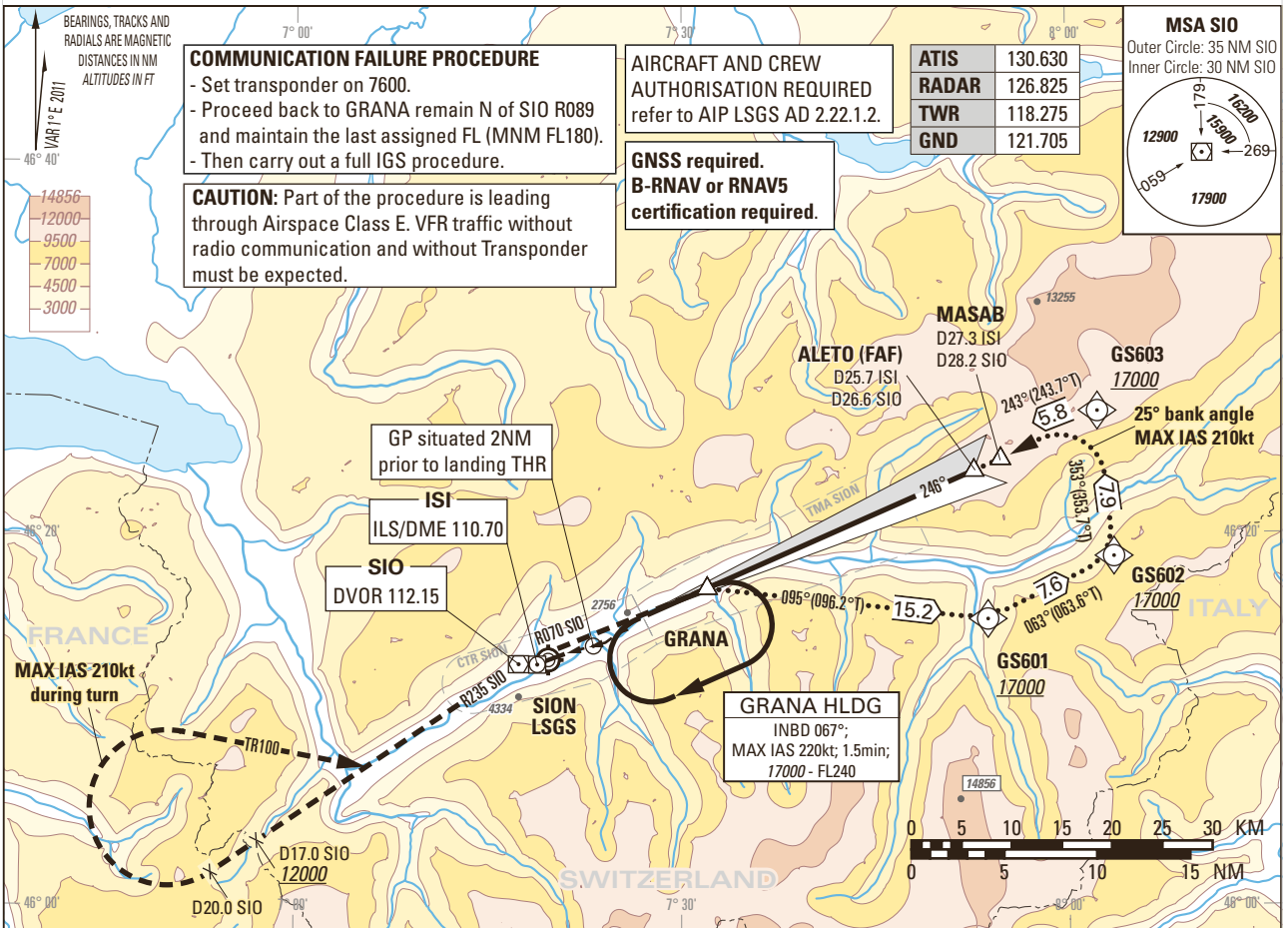
THIS PAGE INTENTIONALLY LEFT BLANK

Instrument Approach Chart
(IAC) - ICAO
(IGS instruction: see LSGS AD 2.22)

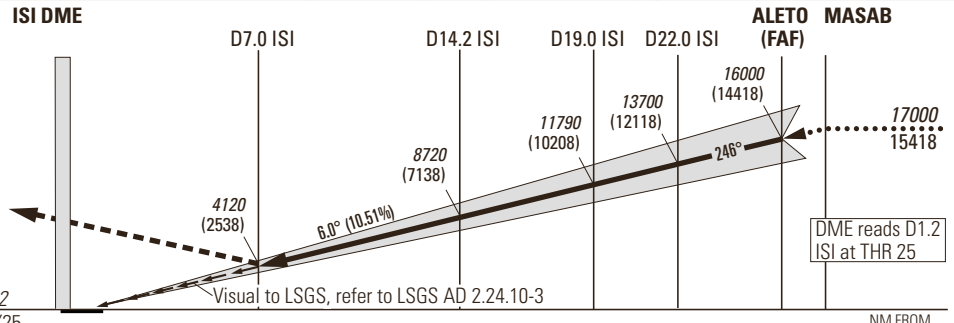
AD ELEV 1582ft

TRANSITION LEVEL by ATC
TRANSITION ALTITUDE 17000

SION LSGS
IGS RWY 25 (ACFT CAT A/B/C)
GLIDE PATH 6.0°, VISUAL PART 4.0°



MISSED APPROACH
Climb initially on LOC course 246°. At D7.0 ISI proceed on TR246. When passing D5.5 SIO, intercept R070 SIO to SIO. Leave SIO on R235, at D20.0 SIO turn right (max IAS 210kt during turn), establish TR100 to intercept R235 SIO INBD SIO. Proceed via SIO to GRANA. Climb to 17000. Cross D17.0 SIO at 12000 or above. GRANA at 17000.



Missed APCH climb gradient requirement	STRAIGHT-IN APPROACH			VIS m	
	A	B	C		
	DECISION ALTITUDE (HEIGHT)				
2.5%	6550 (4970) ¹⁾			5000	
3.0%	6110 (4530) ¹⁾				
3.5%	5670 (4090) ¹⁾				
4.0%	5230 (3650) ¹⁾				
4.5%	4790 (3210) ¹⁾				
5.0%	4350 (2770) ¹⁾				
5.5%	4120 (2540) ¹⁾				
Circling north of AD only ^{1) 2) 3)}	3700	5400	5400	5000	
ROD	GS kt	90	110	130	150
	FT/MIN	958	1171	1384	1597

	7	8	9	10	12	14	16
DIST ISI	7	8	9	10	12	14	16
DIST THR	5.8	6.8	7.8	8.8	10.8	12.8	14.8
ALT FT	4020	4660	5300	5930	7210	8490	9770
DIST ISI	18	20	22	24	25	25.7	27.3
DIST THR	16.8	18.8	20.8	22.8	23.8	24.5	26.1
ALT FT	11040	17320	13700	14870	15510	15960	16980

REMARK
- APCH PROHIBITED IF GP U/S.
- Table for temperature deviation from ISA. See LSGS AD 2.23.2.
- Final approach offset 7° from RWY centerline.
- If unable to comply with MAX HLDG speed, inform ATC.

CAUTION
- This is not a standard approach angle.
- VSS (Visual Segment Surface) not free of OBST (see Visual Chart).

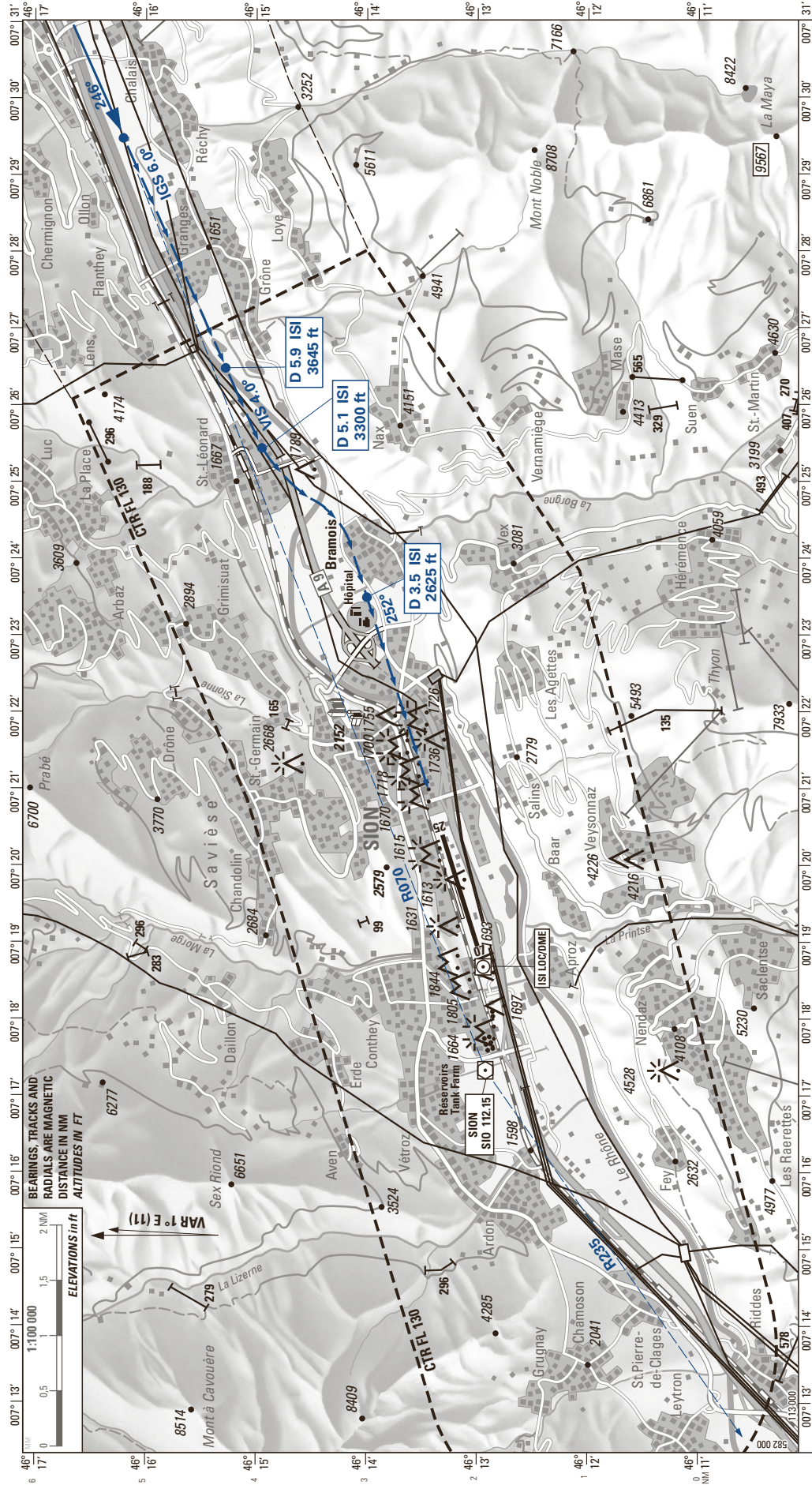
NOTE
¹⁾ Special training required.
²⁾ Night circling prohibited.
³⁾ ACFT categories A, B and C with max circling speed «CAT B».

COR: FREQ changed (WEF 08NOV2018)

THIS PAGE INTENTIONALLY LEFT BLANK

IGS RWY 25 VIS APCH

SION



NOTE: The altitudes along the visual approach track are for pilots guidance only.
They are calculated with distance and approach angle (4.0°) and do not grant any terrain clearance according to PANS OPS.
LOC information unreliable between D0 ISI and D7 ISI,
use DME information only.

RMK: PAPI RWY 25 4.0° light beam is offset 5° north from runway axis.
CTN: ICAO obstacle protection surface and PAPI light beam are penetrated by topography starting east of Bramois village (D4.0 ISI).

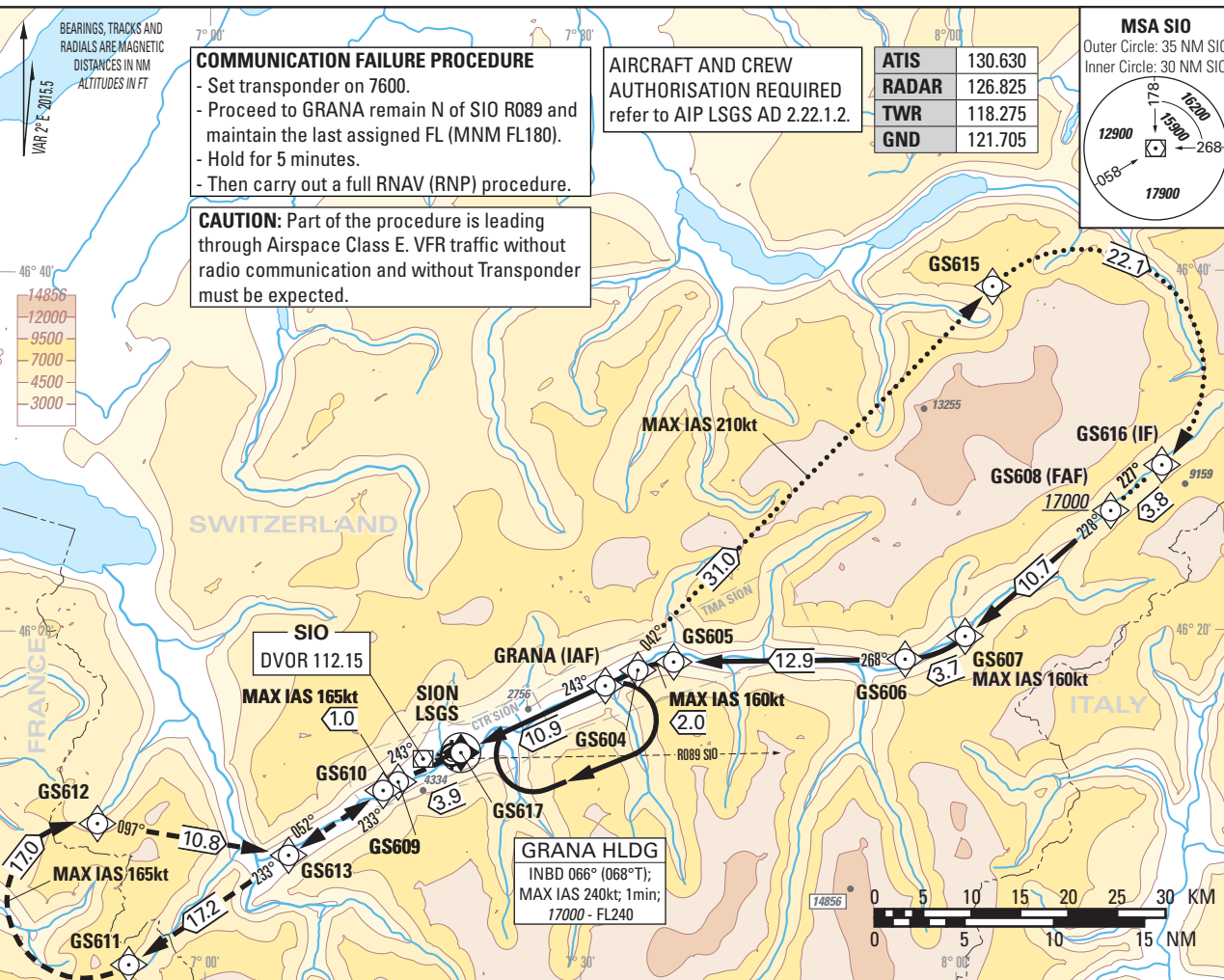
THIS PAGE INTENTIONALLY LEFT BLANK

Instrument Approach Chart
(IAC) - ICAO

AD ELEV 1582ft

TRANSITION LEVEL by ATC
TRANSITION ALTITUDE 17000

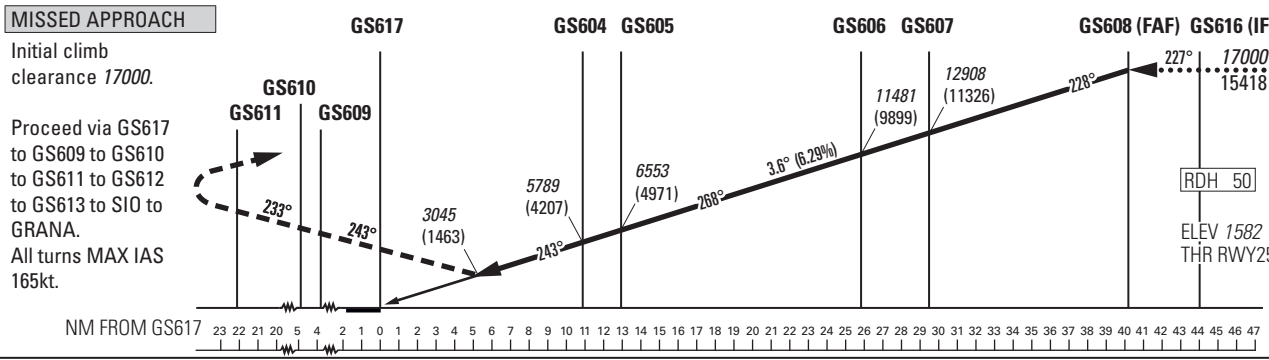
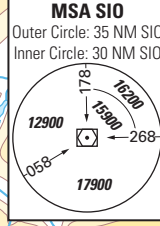
SION LSGS
RNAV (RNP) RWY 25
ACFT CAT A/B/C



COMMUNICATION FAILURE PROCEDURE
 - Set transponder on 7600.
 - Proceed to GRANA remain N of SIO R089 and maintain the last assigned FL (MNM FL180).
 - Hold for 5 minutes.
 - Then carry out a full RNAV (RNP) procedure.
CAUTION: Part of the procedure is leading through Airspace Class E. VFR traffic without radio communication and without Transponder must be expected.

AIRCRAFT AND CREW
AUTHORISATION REQUIRED
refer to AIP LSGS AD 2.22.1.2.

ATIS	130.630
RADAR	126.825
TWR	118.275
GND	121.705



DECISION ALTITUDE (HEIGHT)	Missed APCH climb gradient requirement	STRAIGHT-IN APPROACH		
		A	B	C
RNP AR 0.3	5.0%	3045 (1463)	3058 (1476)	3071 (1489)

ROD	GS kt	80	100	120	140	160
	FT/MIN	510	640	760	890	1020

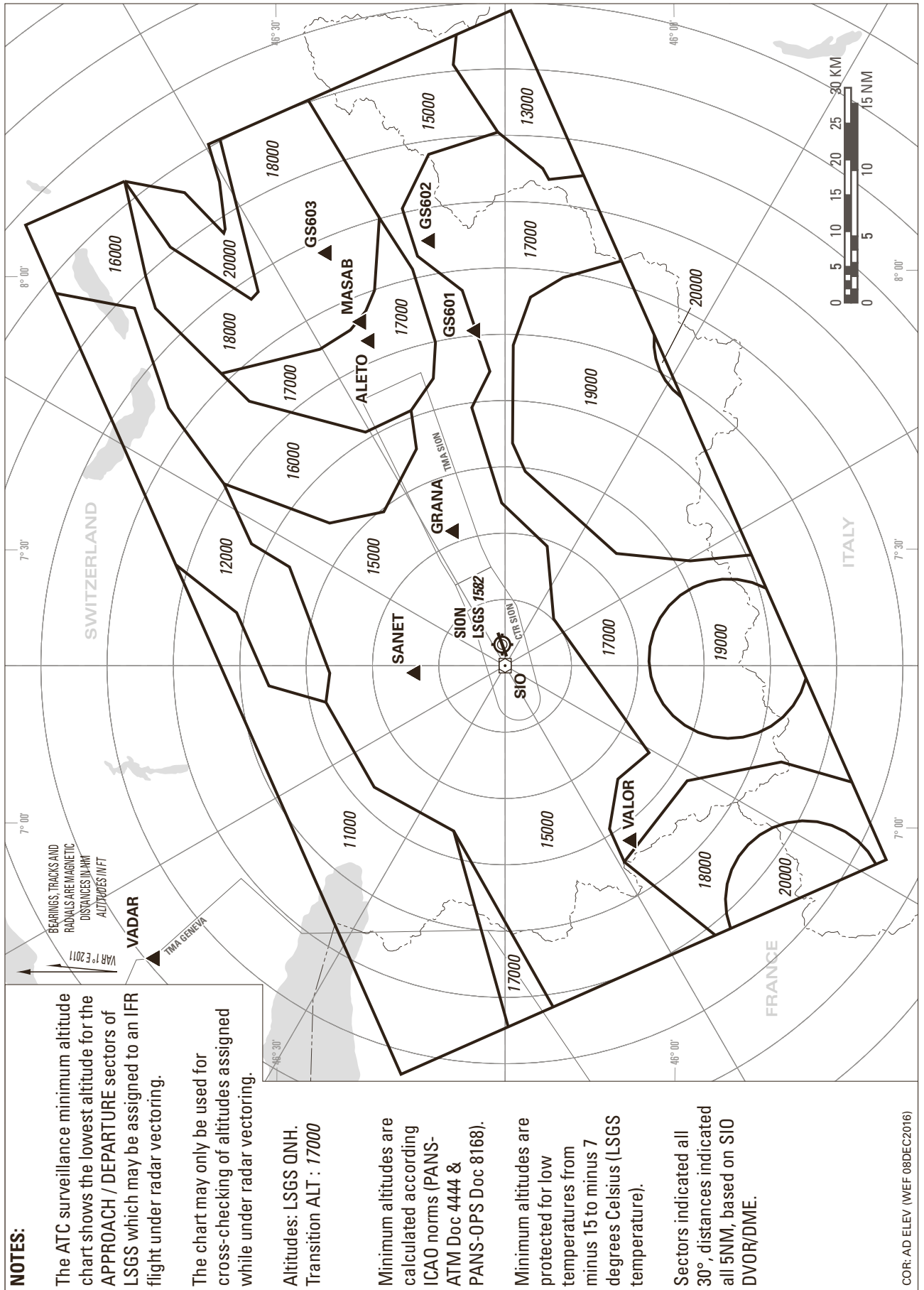
Missed APCH WPT	GS609	GS610	GS611	GS612
recommended CROSSING ALTITUDE (HEIGHT) for Missed APCH climb gradient 5.0%	5050 (3470)	5340 (3760)	10560 (8980)	15710 (14130)

REMARK
 - Approach not authorized when airport temperature below -18°C or above +37°C.
 - RNP AR RDH = 50 (PAPI MEHT = 40ft).
 - PAPI 4.0° not coincident with VPA.
 - RNP 0.5 in Missed-Approach up to GS611.
 - VSS (Visual Segment Surface) free of obstacles.
CAUTION
 - On 3.6° APCH angle and GS > 150kt resulting ROD will be > 1000ft/min.

COR: FREQ changed (WEF 08NOV2018)

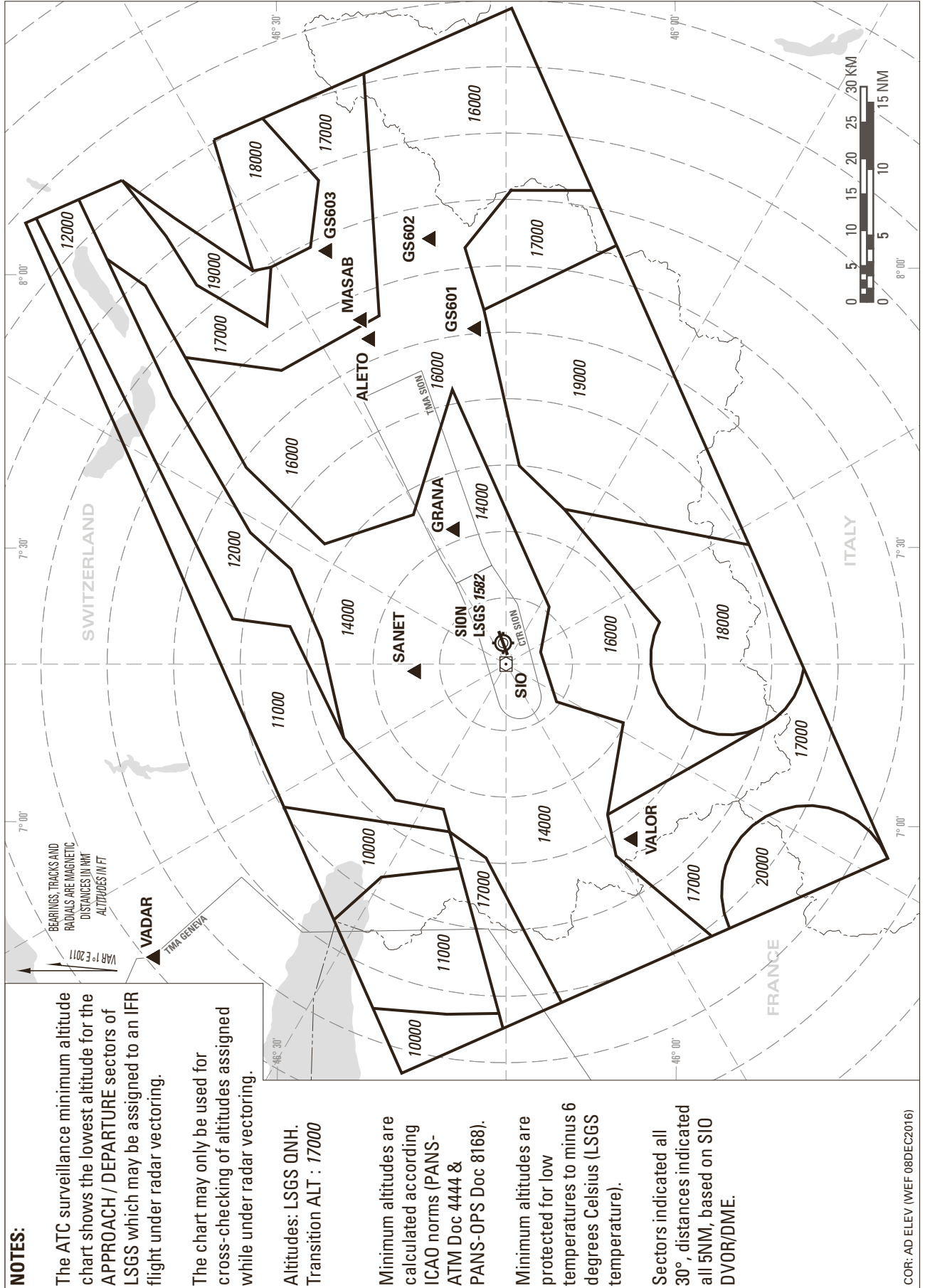
THIS PAGE INTENTIONALLY LEFT BLANK

ATC SURVEILLANCE MINIMUM ALTITUDE CHART (ADTEMPERATURES FROM -15° TO -7°C)



THIS PAGE INTENTIONALLY LEFT BLANK

ATC SURVEILLANCE MINIMUM ALTITUDE CHART (ADTEMPERATURES -6°C AND ABOVE)



THIS PAGE INTENTIONALLY LEFT BLANK