

THIS PAGE INTENTIONALLY LEFT BLANK

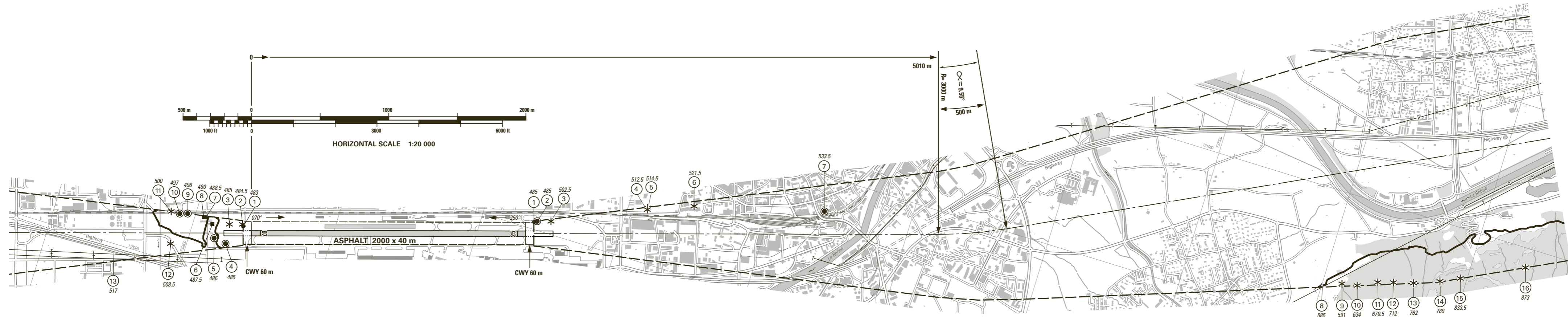
THIS PAGE INTENTIONALLY LEFT BLANK

VAR 3° E (2021.5)

Profile view see LSGS AD 2.24.4-2

RWY: 07-25

RWY 07	DECLARED DISTANCES in m	RWY 25
2000	TAKE-OFF RUN AVAILABLE	2000
2060	TAKE-OFF DISTANCE AVAILABLE	2060
2000	ACCELERATE STOP DISTANCE AVAILABLE	2000
1935	LANDING DISTANCE AVAILABLE	1940



AMDT RECORD		
No.	DATE	ENTERED BY

LEGEND

- ① Identification number
- * Tree, shrub
- Pole, tower, spire, antenna, etc.
- Building, large structure
- Enclosure
- Transmission line, overhead cable
- ⤴ Terrain penetrating obstacle plane

OBST ELEV in m

AD ELEV in m

ORDER OF ACCURACY ACCORDING TO ICAO REQUIREMENTS

COR: editorial (WEF 23JAN2025)

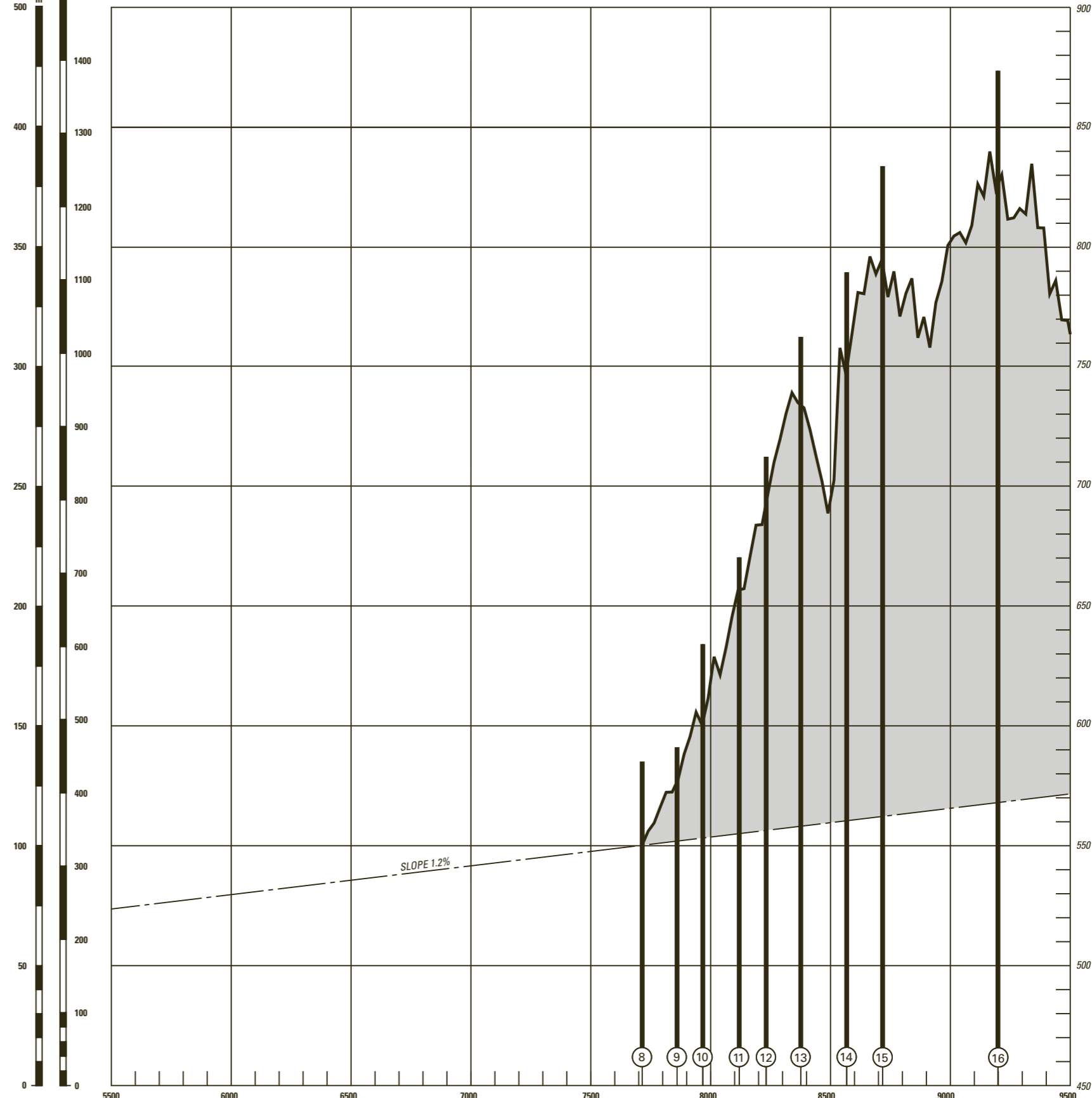
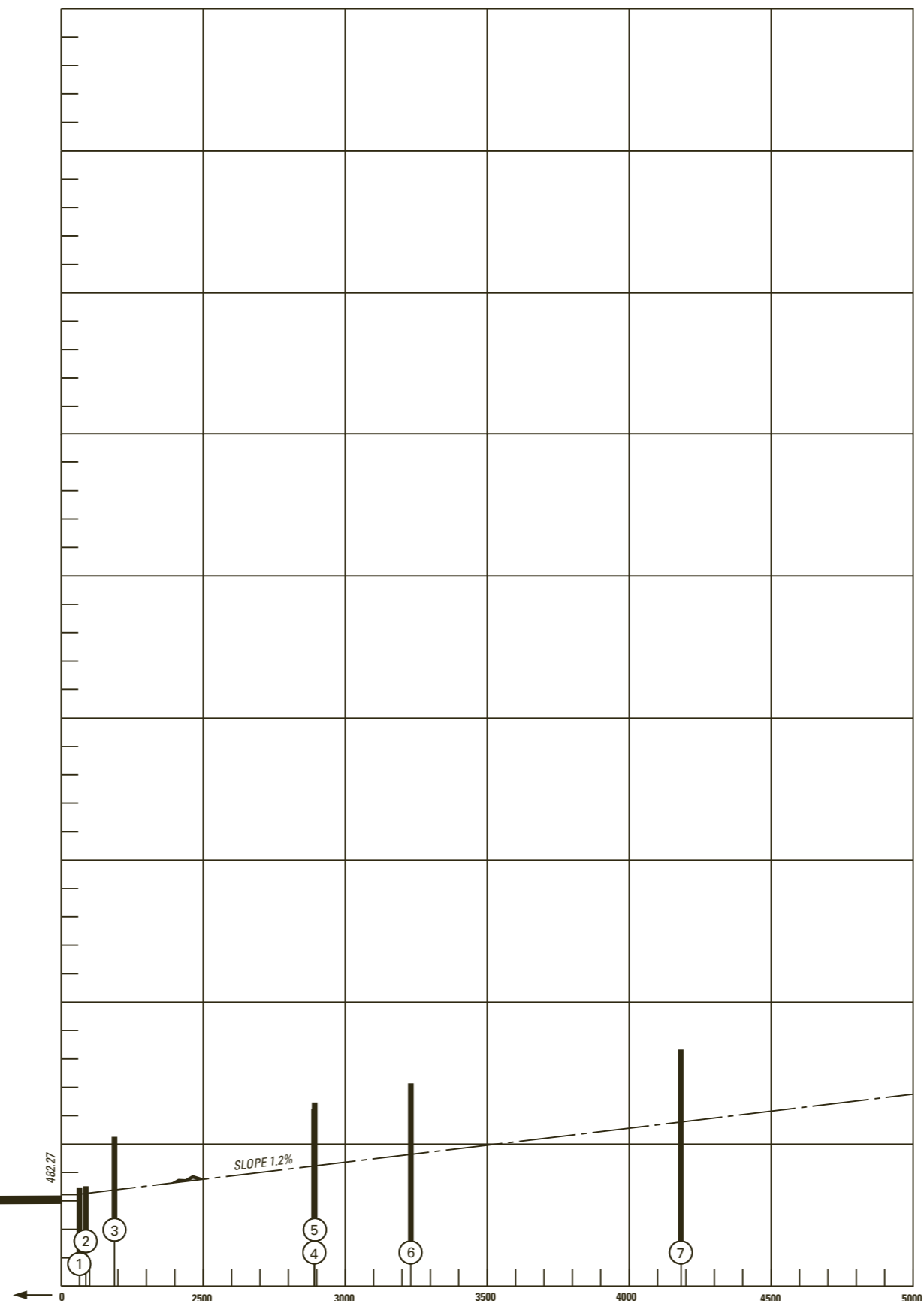
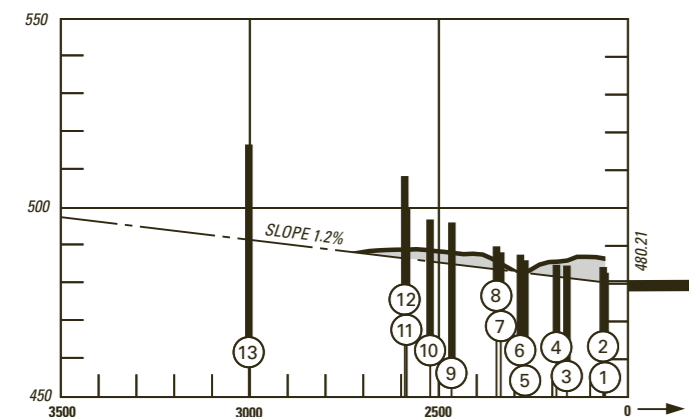
© Swisstopo

VAR 3° E (2021.5)

Plan view see LSGS AD 2.24.4-1

PROFILE RWY: 07-25

- ① Identification number
- ▬ Terrain penetrating obstacle plane



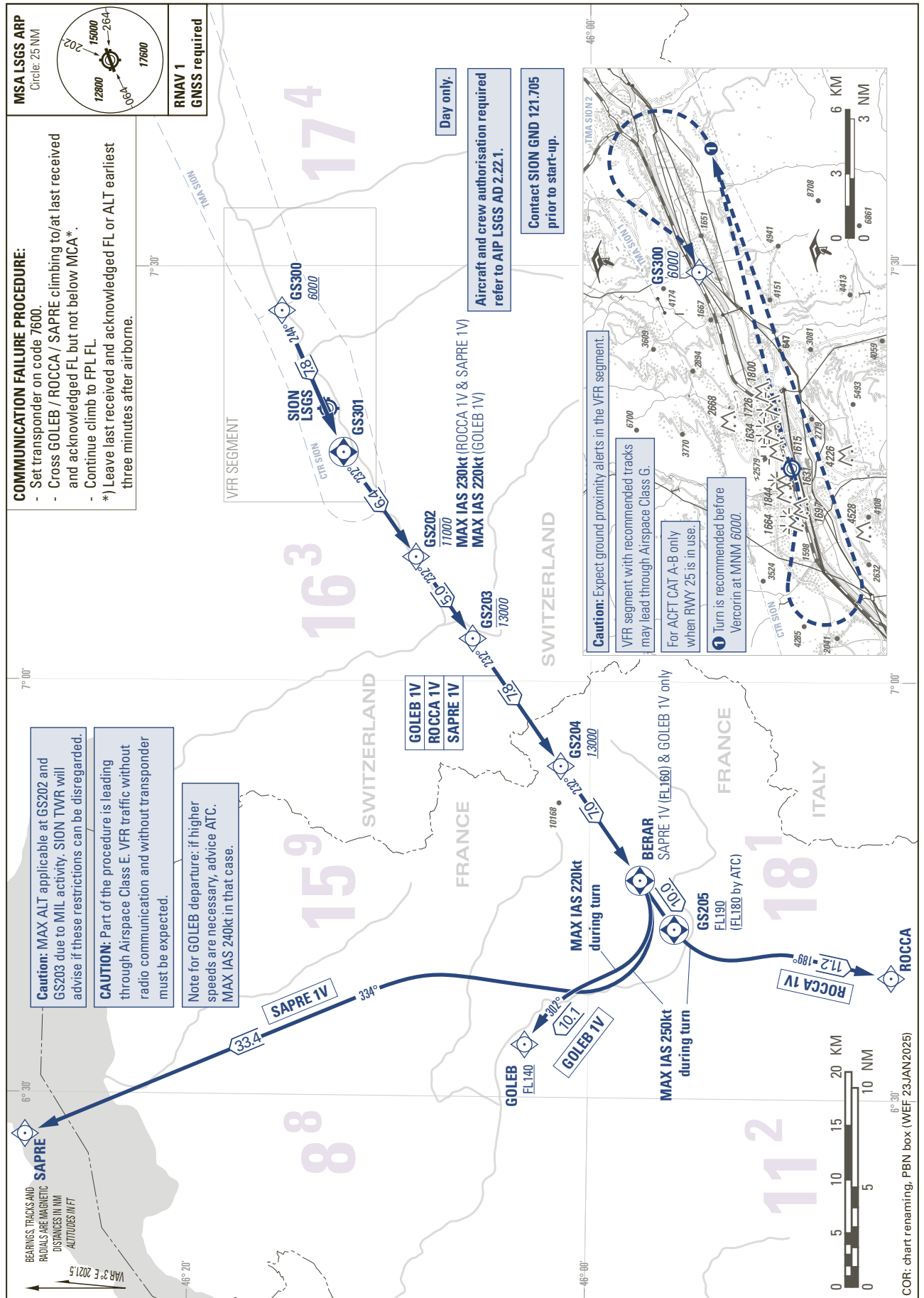
VERTICAL SCALE
1 : 2000

STANDARD DEPARTURE CHART -
INSTRUMENT (SID) - ICAO

TRANSITION LEVEL by ATC
TRANSITION ALTITUDE 13000

SION (LSGS)
RNAV low performance RWY 07/25

GOLEB 1V ROCCA 1V SAPRE 1V



THIS PAGE INTENTIONALLY LEFT BLANK

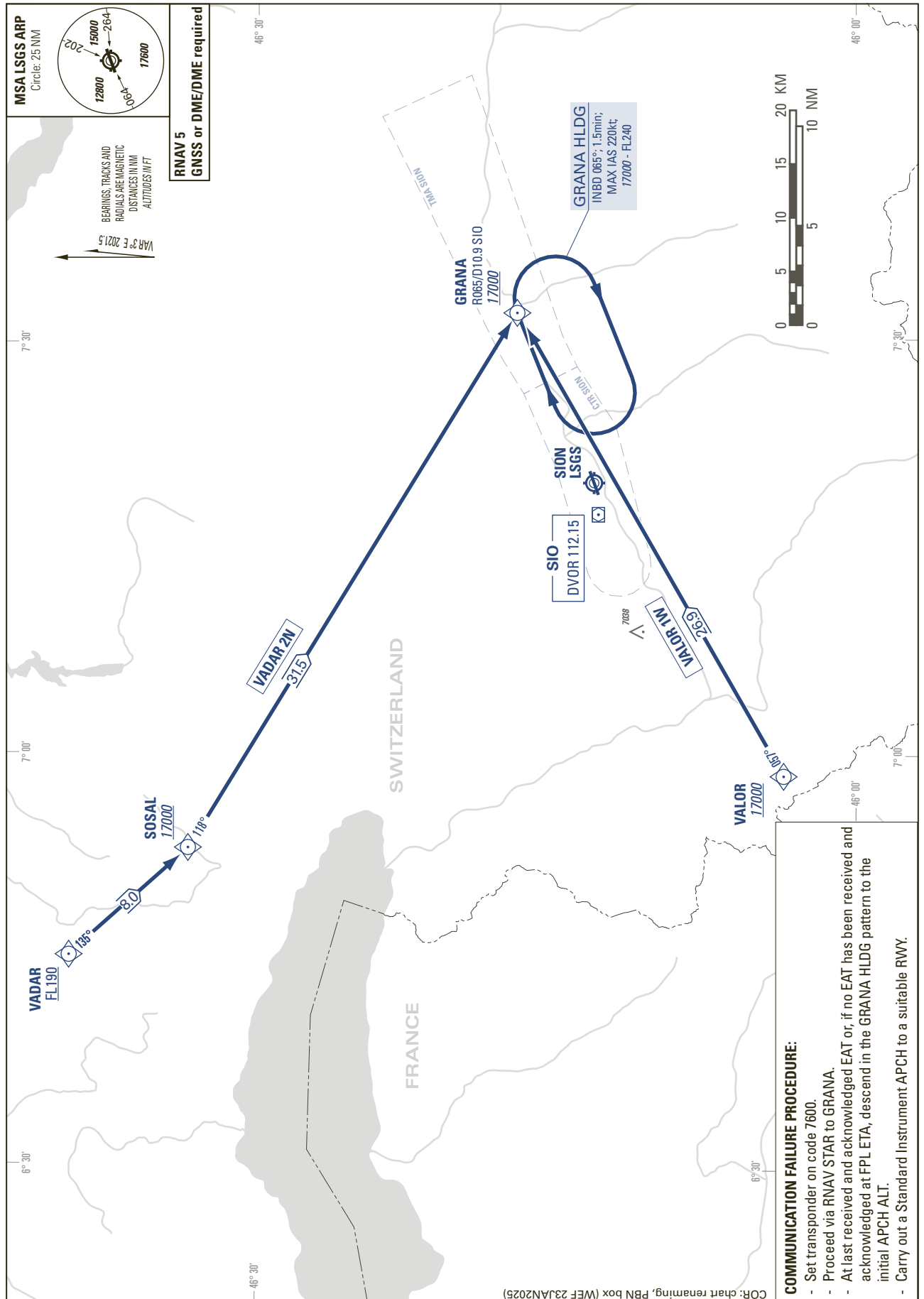
THIS PAGE INTENTIONALLY LEFT BLANK

STANDARD ARRIVAL CHART -
INSTRUMENT (STAR) - ICAO

TRANSITION LEVEL by ATC
TRANSITION ALTITUDE 17000

SION (LSGS)
RNAV GRANA

VADAR 2N VALOR 1W



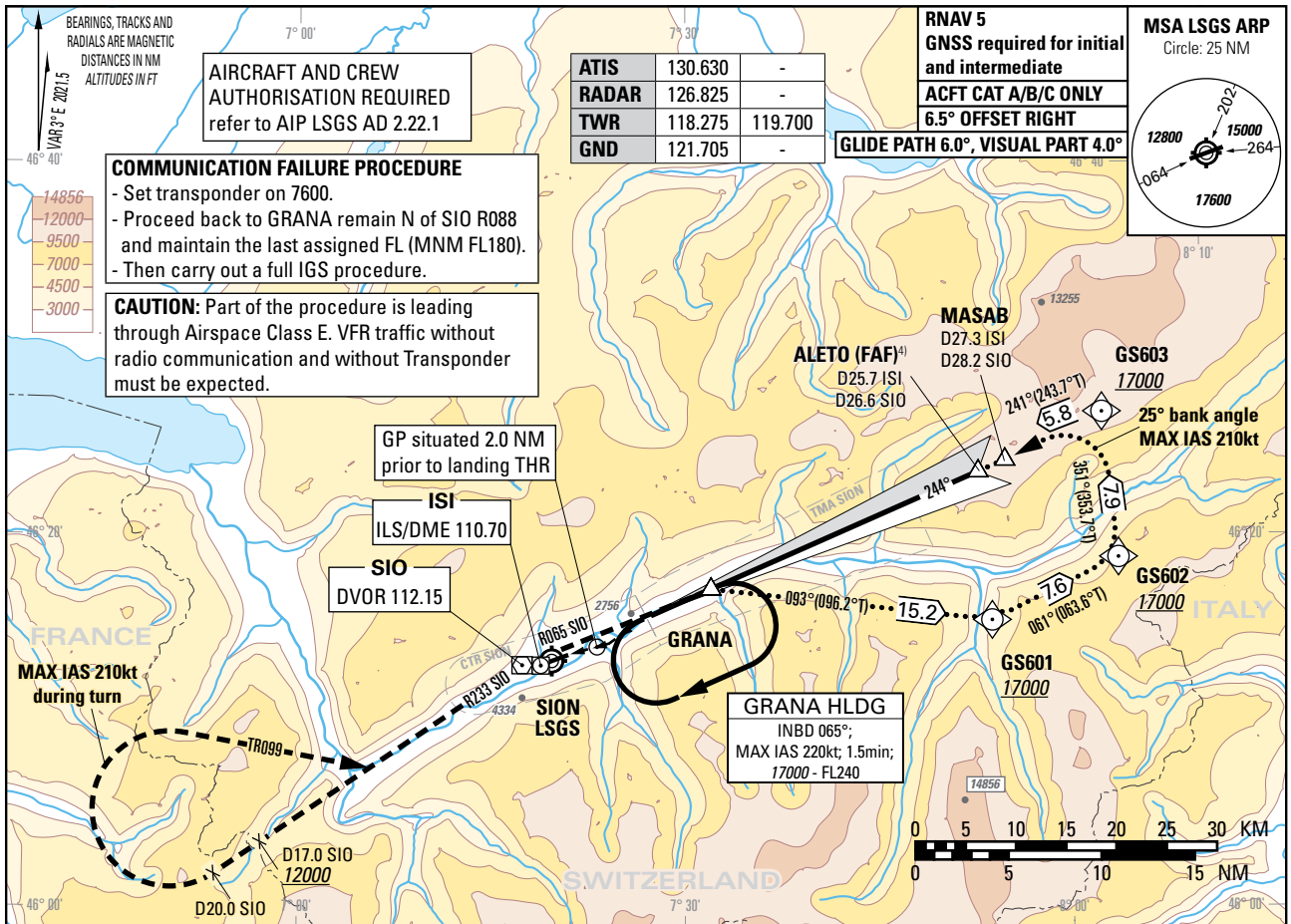
THIS PAGE INTENTIONALLY LEFT BLANK

Instrument Approach Chart
(IAC) - ICAO
(IGS instruction: see LSGS AD 2.22)

AD ELEV 1582ft

TRANSITION LEVEL by ATC
TRANSITION ALTITUDE 17000

SION (LSGS)
IGS RWY 25



REMARK
 - APCH PROHIBITED IF GP U/S.
 - Table for temperature deviation from ISA. See LSGS AD 2.23.2.
 - Final APCH offset 6.5° from RCL.
 - If unable to comply with MAX HLDG speed, inform ATC.

CAUTION
 - This is not a standard APCH angle.

NOTE
¹⁾ Special training required. ²⁾ Night circling prohibited. ⁴⁾ At ALETO, GP 15970.
³⁾ ACFT categories A, B with speed limit of 125kt.

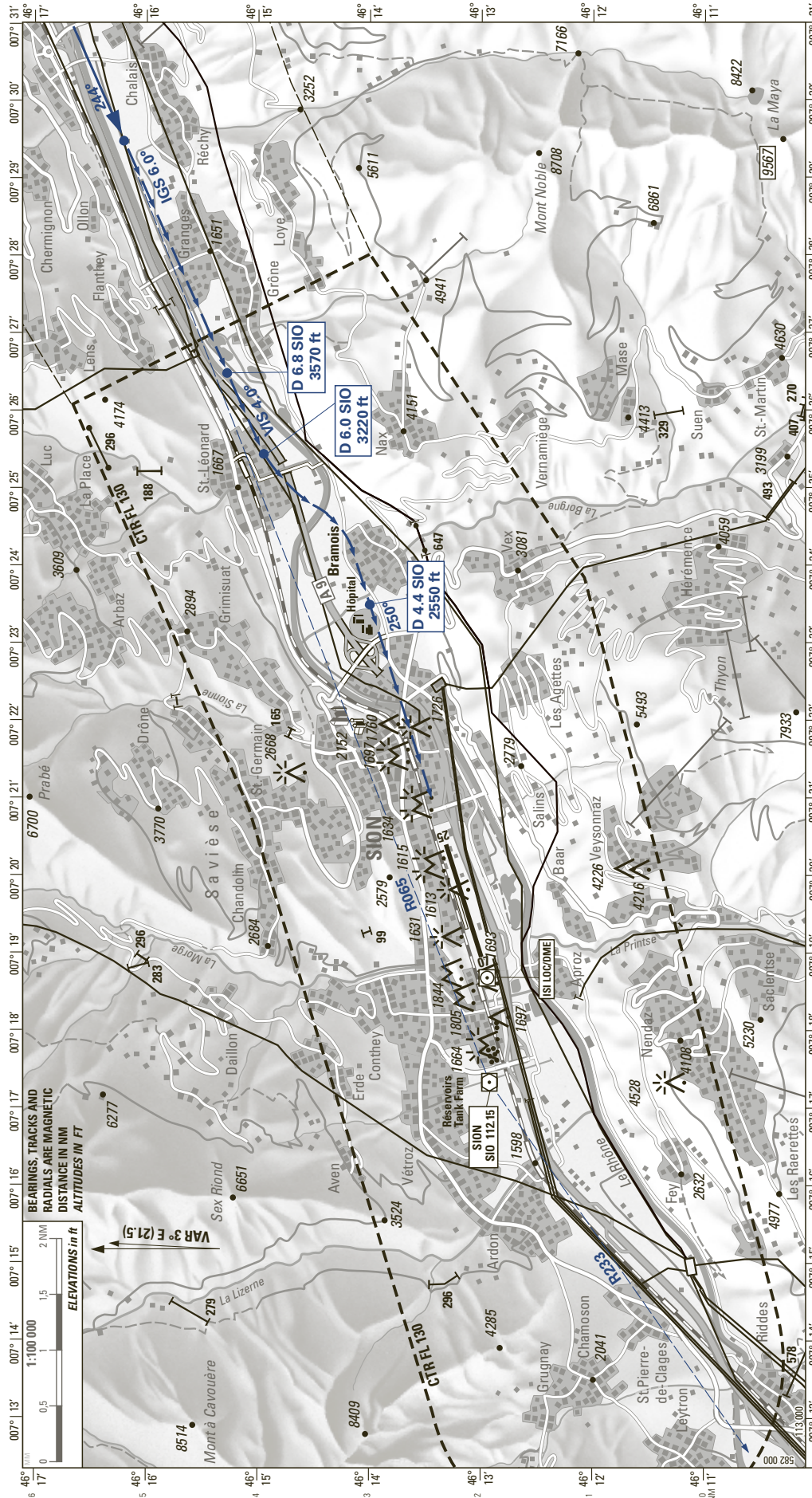
COR: chart renaming, PBN box (WEF 23JAN2025)

THIS PAGE INTENTIONALLY LEFT BLANK

VISUAL APPROACH PROCEDURE

ELEV 1582 ft

SION (LSGS)
 IGS RWY 25



BEARINGS, TRACKS AND RADIALS ARE MAGNETIC
 DISTANCE IN NM
 ALTITUDES IN FT

VAR 3° E (21.5)

ELEVATIONS in ft

1:100 000

0 0.5 1.5 2 NM

NOTE: The altitudes along the visual approach track are for pilots guidance only.
 They are calculated with distance and approach angle (4.0°) and do not grant any terrain clearance according to PANS OPS.
 LOC information unreliable between D0 ISI and D7 ISI,
 use DME information only.

RMK: PAPI RWY 25 4.0° light beam is offset 5° north from runway axis.
CTN: ICAO obstacle protection surface and PAPI light beam are penetrated by topography starting east of Bramois village (D4.0 ISI).
CTN: Power transmission line south of Bramois 647 ft / AGL.

COR: chart renaming (WFF 23JAN2025) © swisstopo

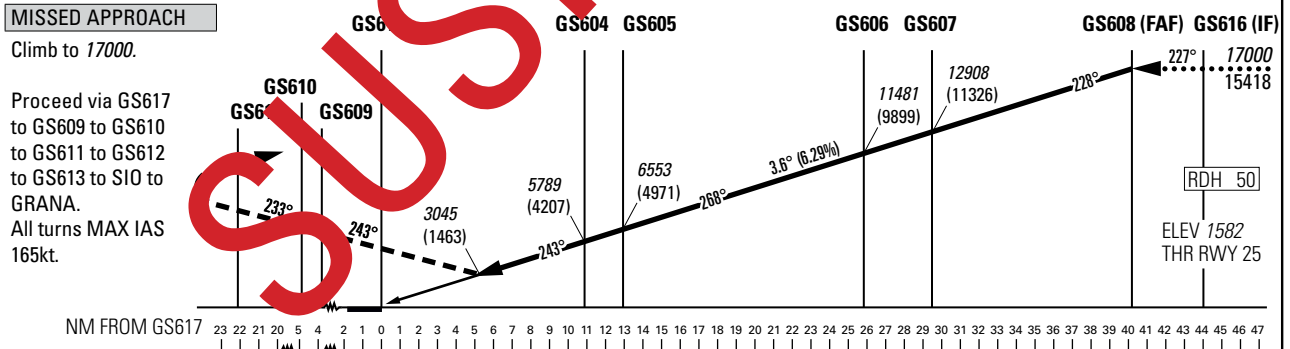
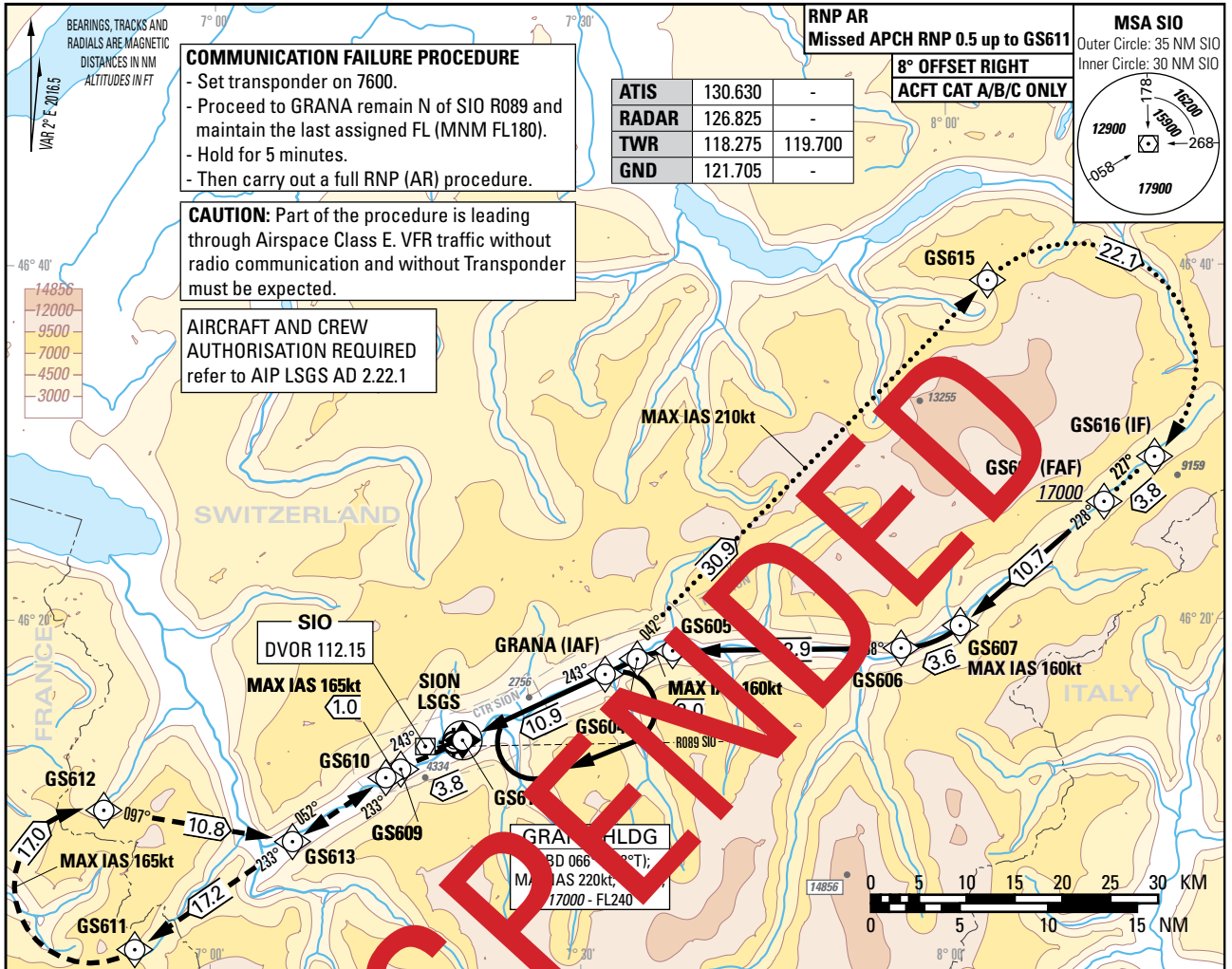
THIS PAGE INTENTIONALLY LEFT BLANK

Instrument Approach Chart
(IAC) - ICAO

AD ELEV 1582ft

TRANSITION LEVEL by ATC
TRANSITION ALTITUDE 17000

SION (LSGS)
RNP RWY 25 (AR)



Missed APCH climb gradient requirement	STRAIGHT-IN APPROACH	OBSTACLE CLEARANCE ALTITUDE (HEIGHT)		
		A	B	C
5.0%	RNP (AR)	3071 (1489)	3084 (1502)	3098 (1516)
		DECISION ALTITUDE (HEIGHT)		
5.0%	RNP (AR)	3071 (1489)	3084 (1502)	3098 (1516)

Missed APCH WPT recommended	GS617	GS609	GS610	GS611	GS612	GS613	SIO	GRANA
CROSSING ALTITUDE (HEIGHT) for Missed APCH climb gradient 5.0%	3699 (2117)	4866 (3284)	5158 (3576)	10375 (8793)	15546 (13964)		17000 (15418)	

ROD	GS kt	80	100	120	140	160
	FT/MIN	510	640	760	890	1020

REMARK

- APCH not authorized when airport temperature below -20°C or above +47°C.
- RNP (AR) RDH = 50 (PAPI MEHT = 40ft).
- PAPI 4.0° not coincident with VPA.
- 0.1 NM BFR THR 25 Visual Segment Surface (VSS) penetrated by trees up to 1670ft AMSL.

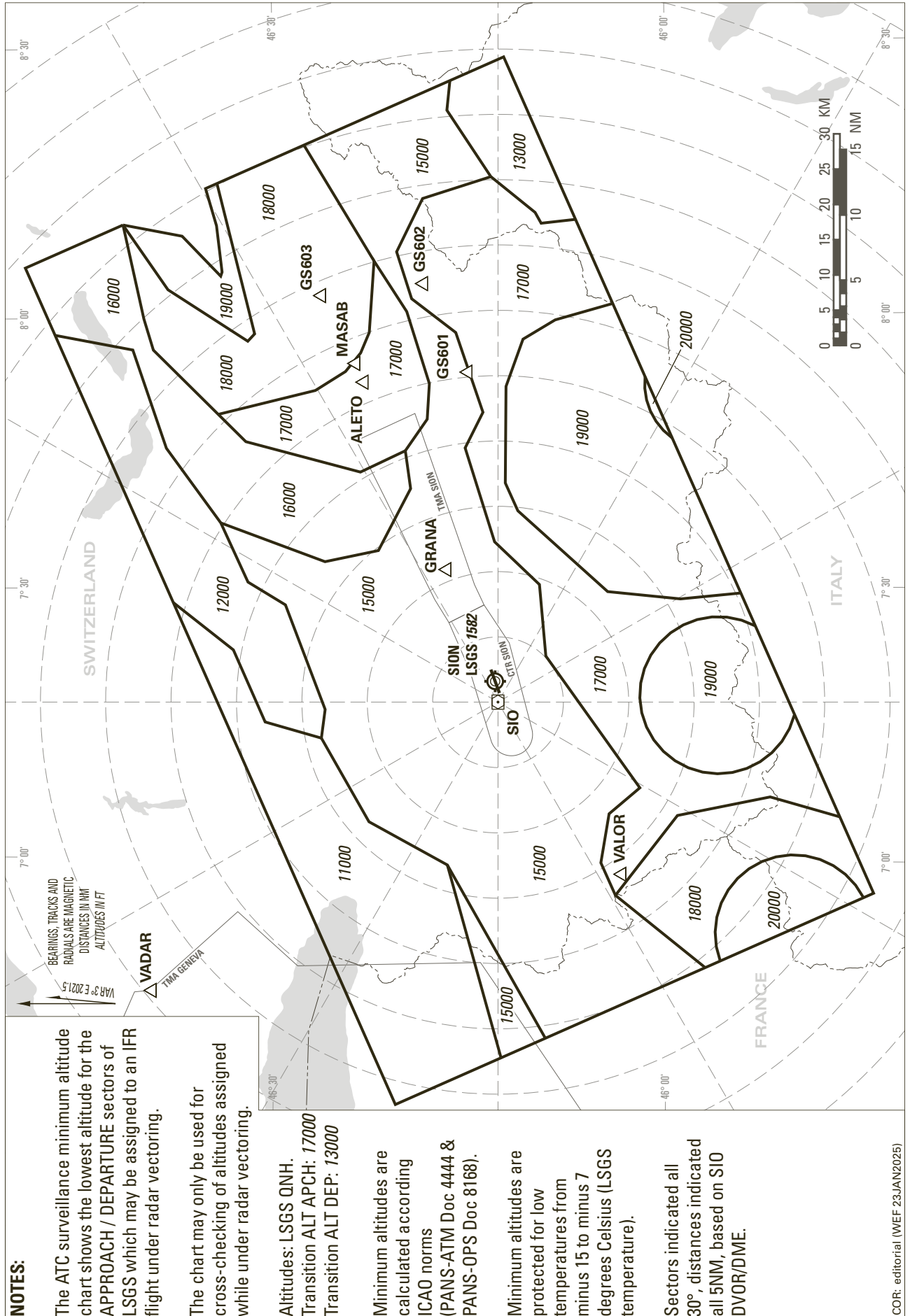
CAUTION

- On 3.6° APCH angle and GS > 150kt resulting ROD will be > 1000ft/min.
- Final APCH track offset by 8° right from RCL intercepting the RCL 480m BFR the THR.

COR: chart renaming, PBN box (WEF 23JAN2025)

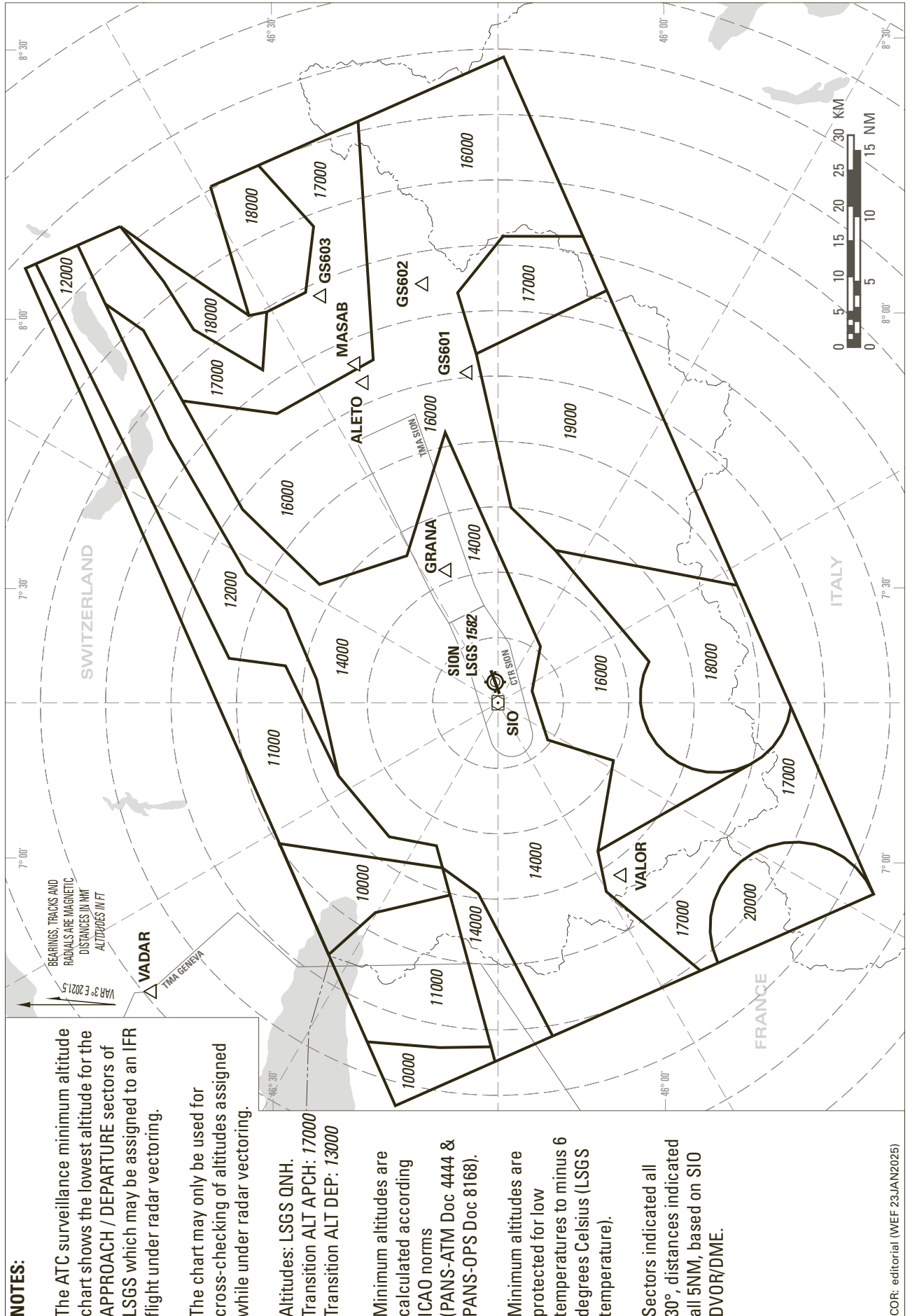
THIS PAGE INTENTIONALLY LEFT BLANK

ATC SURVEILLANCE MINIMUM ALTITUDE CHART (AD TEMPERATURES FROM -15°C TO -7°C)



THIS PAGE INTENTIONALLY LEFT BLANK

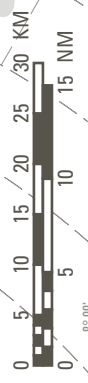
ATC SURVEILLANCE MINIMUM ALTITUDE CHART (ADTEMPERATURES -6°C AND ABOVE)



BEARINGS, TRACKS AND RADIALS ARE MAGNETIC
DISTANCES IN NM
ALTITUDES IN FT

VAR 3° E 2021.5

VADAR
TMA GENÈVE



NOTES:

The ATC surveillance minimum altitude chart shows the lowest altitude for the APPROACH / DEPARTURE sectors of LSGS which may be assigned to an IFR flight under radar vectoring.

The chart may only be used for cross-checking of altitudes assigned while under radar vectoring.

Altitudes: LSGS QNH.
Transition ALT APCH: 17000
Transition ALT DEP: 13000

Minimum altitudes are calculated according ICAO norms (PANS-ATM Doc 4444 & PANS-OPS Doc 8168).

Minimum altitudes are protected for low temperatures to minus 6 degrees Celsius (LSGS temperature).

Sectors indicated all 30°, distances indicated all 5NM, based on SIO DVOR/DME.

COR: editorial (WEF 23.JAN2025)

THIS PAGE INTENTIONALLY LEFT BLANK