



THIS PAGE INTENTIONALLY LEFT BLANK



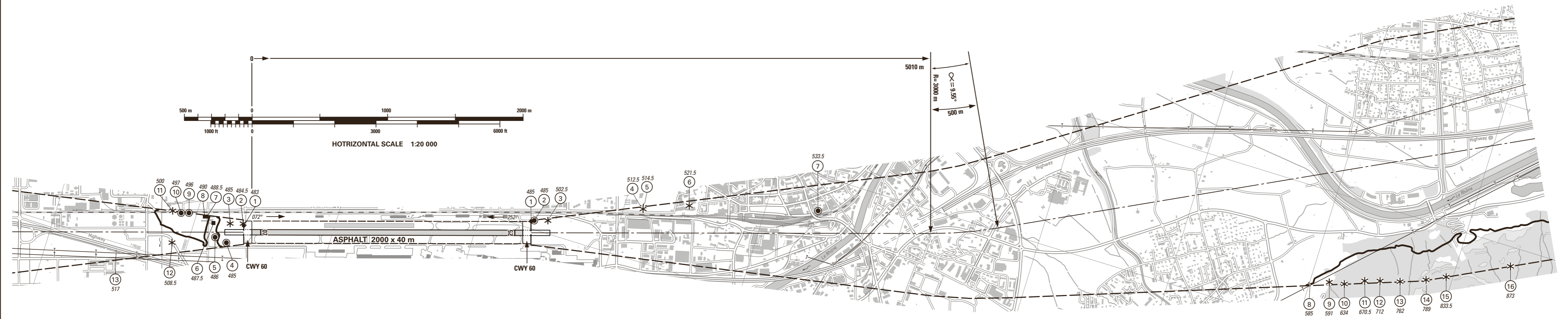
THIS PAGE INTENTIONALLY LEFT BLANK

VAR 2° E (2016.5)

Profile view see LSGS AD 2.24.4-2

**RWY: 07-25**

RWY 07	DECLARED DISTANCES in m	RWY 25
2000	TAKE-OFF RUN AVAILABLE	2000
2060	TAKE-OFF DISTANCE AVAILABLE	2060
2000	ACCELERATE STOP DISTANCE AVAILABLE	2000
1935	LANDING DISTANCE AVAILABLE	1940



AMDT RECORD		
No.	DATE	ENTERED BY

**LEGEND**

- ① Identification number
- \* Tree, shrub
- Pole, tower, spire, antenna, etc.
- Building, large structure
- Enclosure
- Transmission line, overhead cable
- ⤴ Terrain penetrating obstacle plane

OBST ELEV in m  
AD ELEV in m  
ORDER OF ACCURACY ACCORDING TO ICAO REQUIREMENTS

COR: completely revised (WEF 22APR2021)

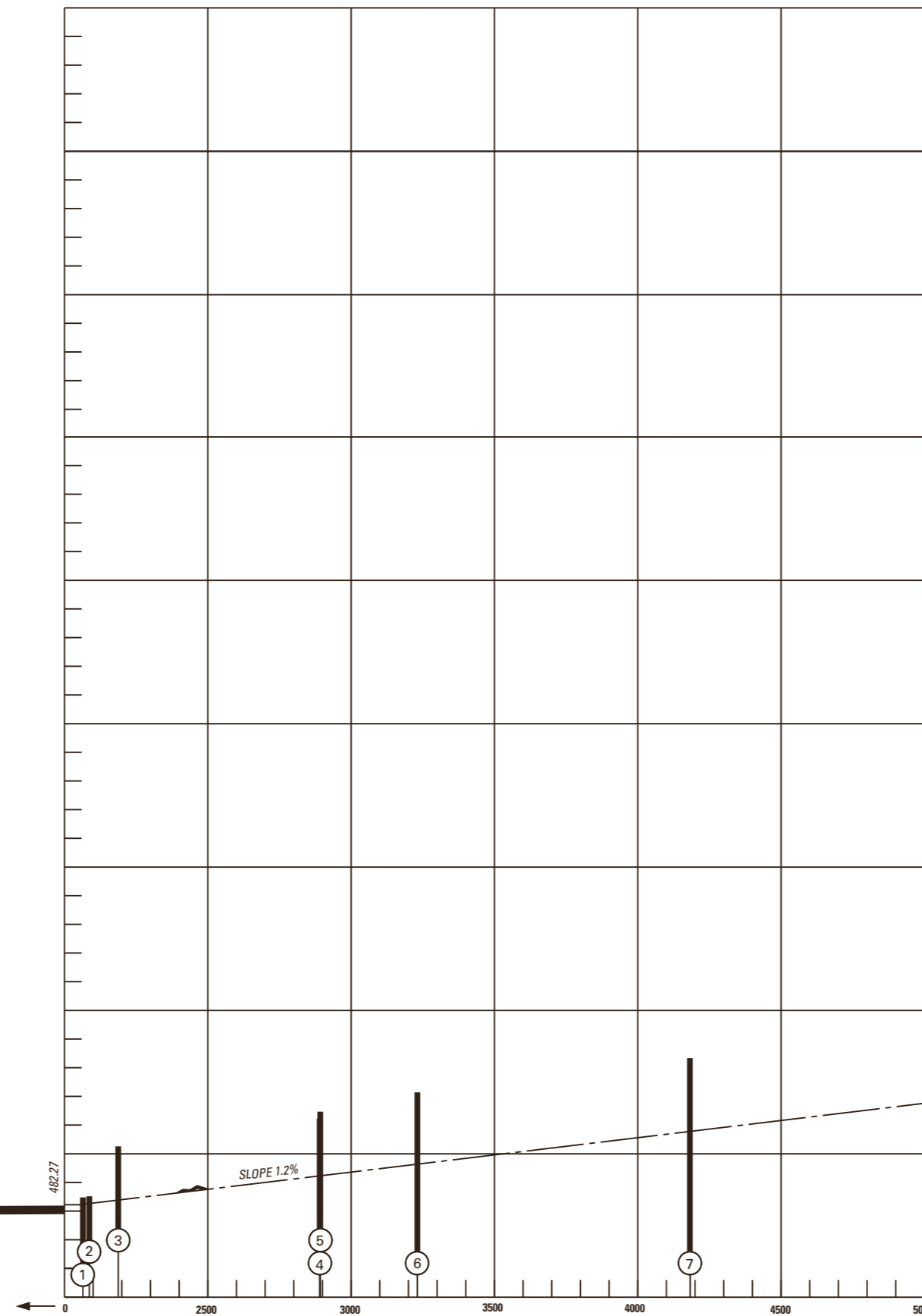
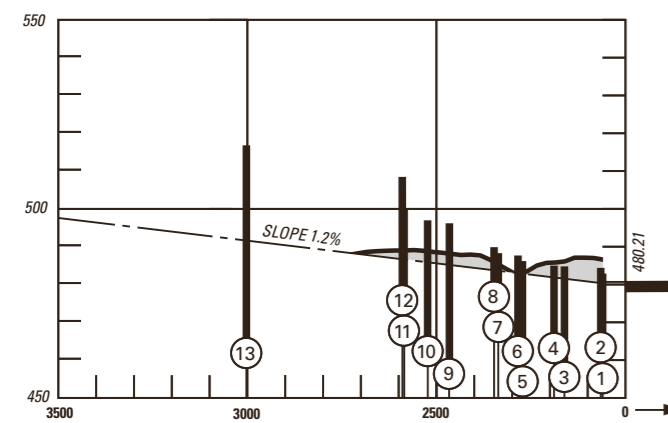
15th Edition

© 2021 Swisstopo, CH-3084 Wabern

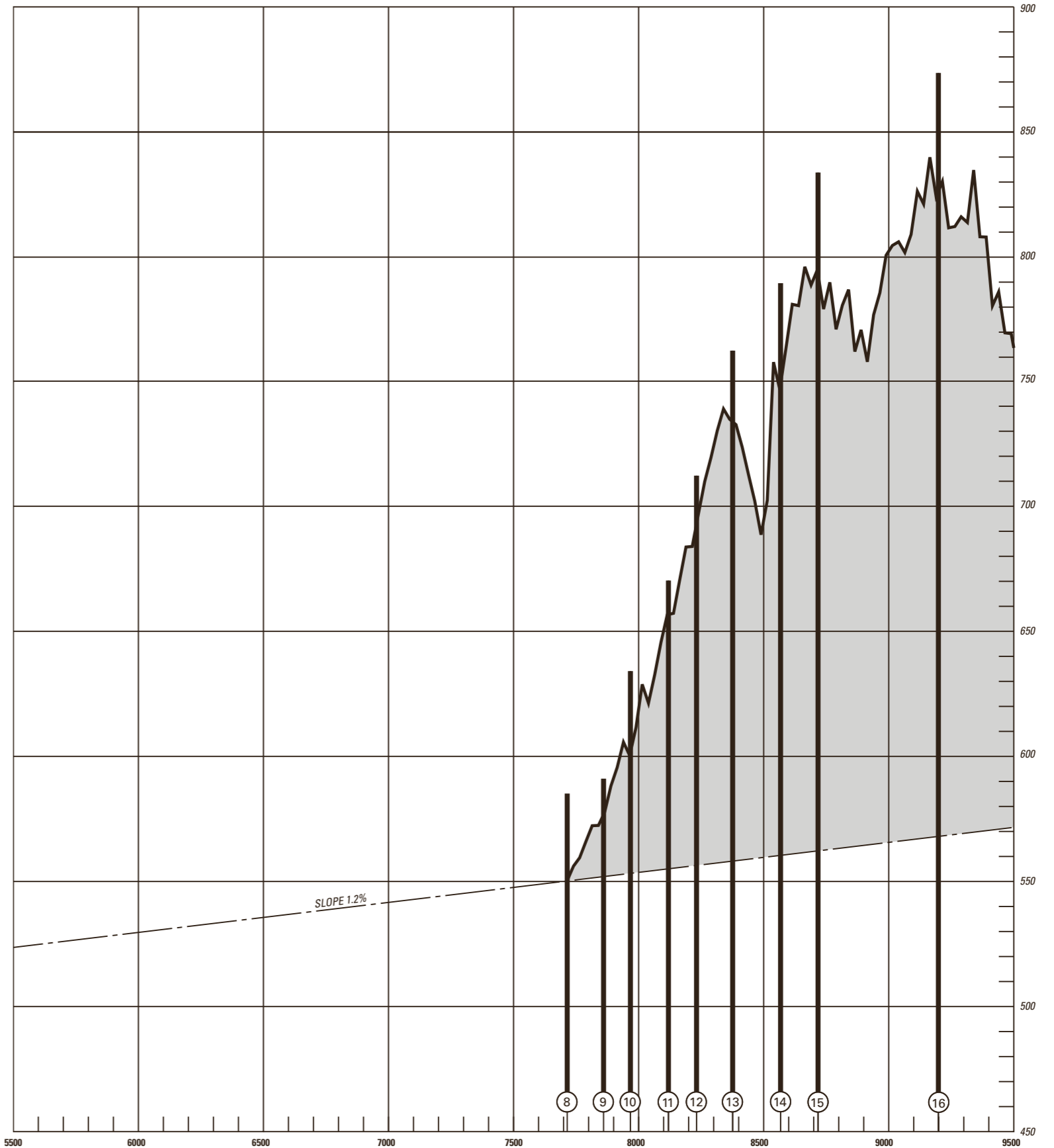
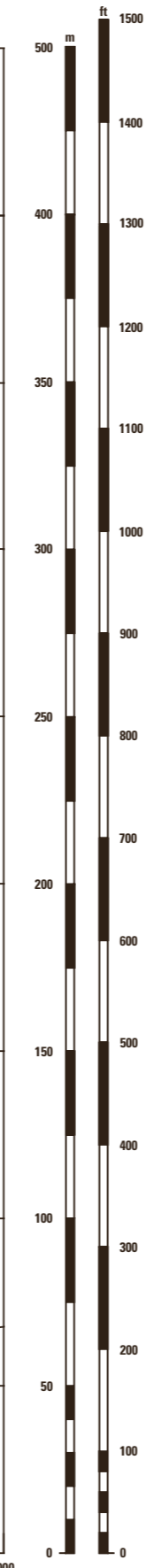
**PROFILE RWY: 07-25**

- ① Identification number
- ⌒ Terrain penetrating obstacle plane

Plan view see LSGS AD 2.24.4-1



VERTICAL SCALE  
1 : 2000



COR: completely revised (WEF 22APR2021)

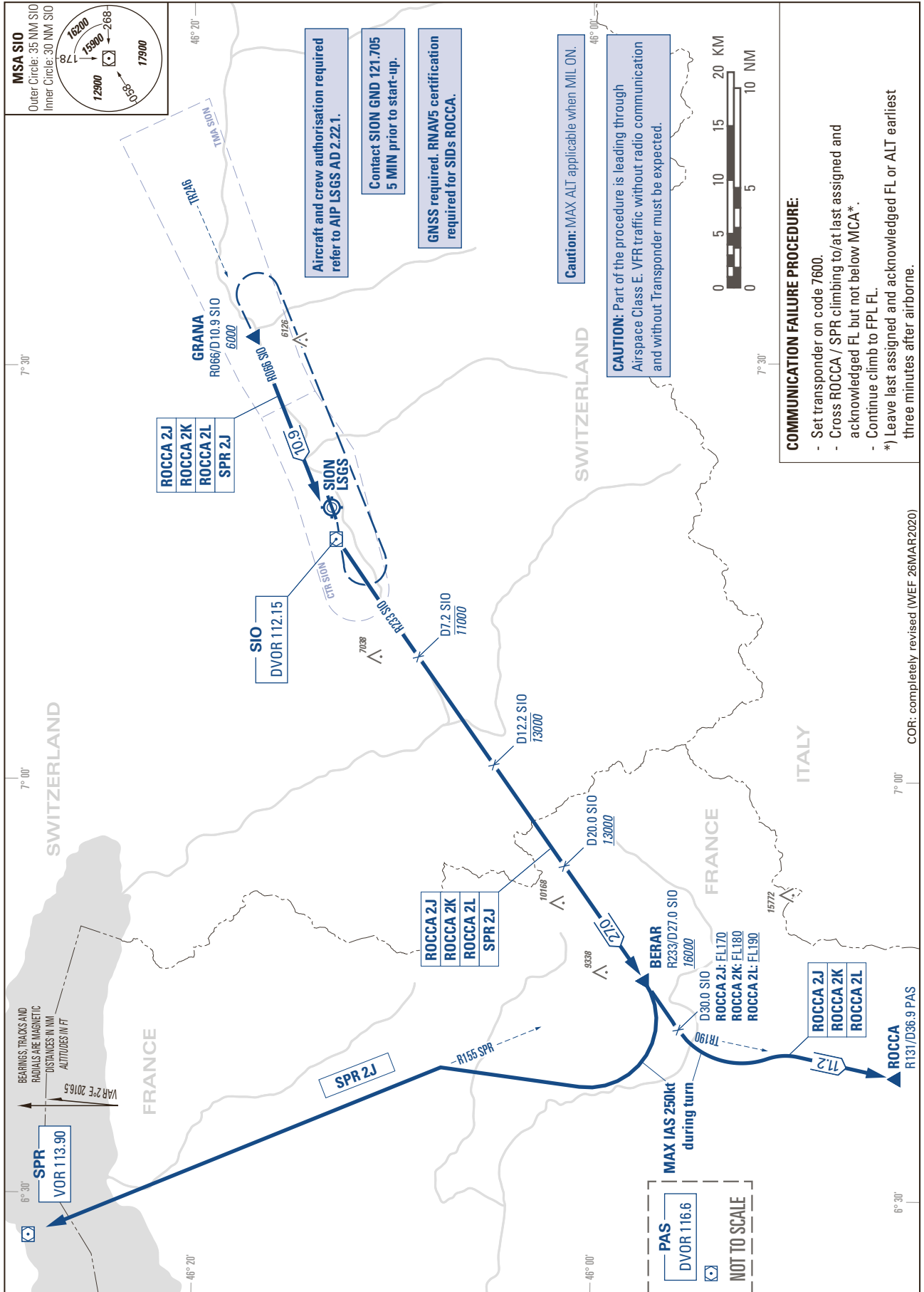
13th Edition

© 2021 Swisstopo, CH-3084 Wabern

STANDARD INSTRUMENT DEPARTURE CHART  
(SID) - ICAO

TRANSITION LEVEL by ATC  
TRANSITION ALTITUDE 17000

SION LSGS  
SID RWY 07/25



COR: completely revised (WEF 26MAR2020)

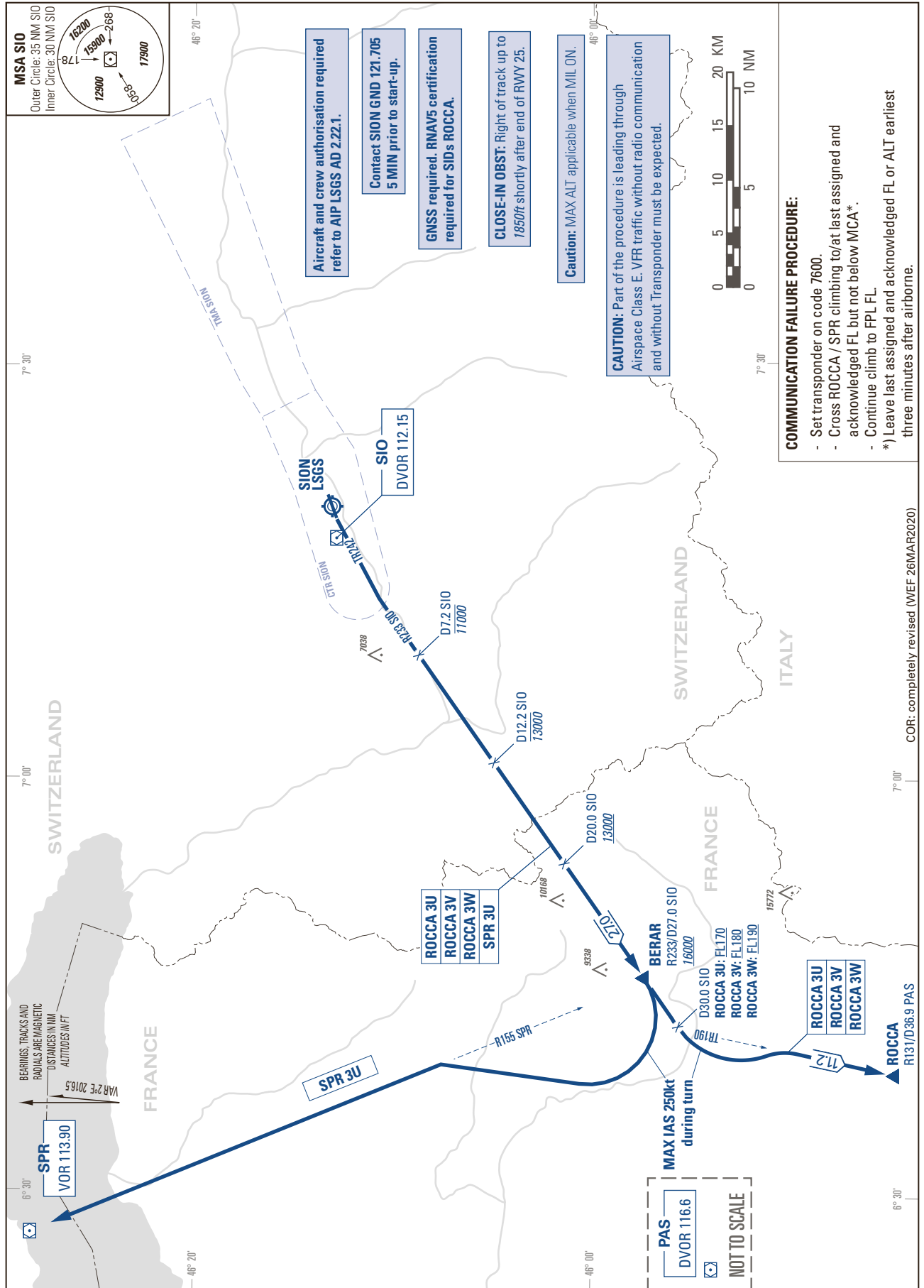
THIS PAGE INTENTIONALLY LEFT BLANK



STANDARD INSTRUMENT DEPARTURE CHART  
(SID) - ICAO

TRANSITION LEVEL by ATC  
TRANSITION ALTITUDE 17000

SION LSGS  
HIGH PERFORMANCE  
SID RWY 25



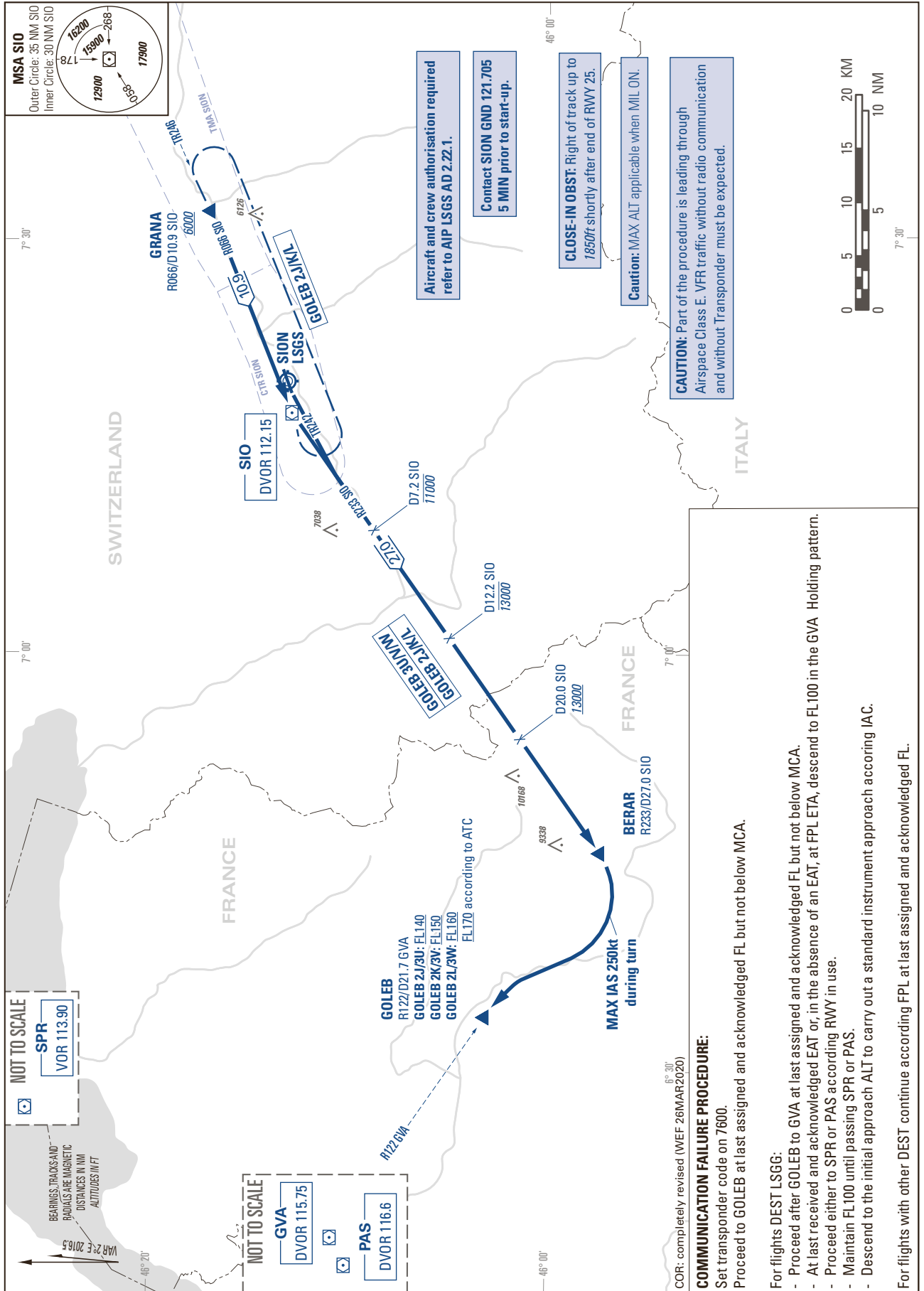
COR: completely revised (WEF 26MAR2020)

THIS PAGE INTENTIONALLY LEFT BLANK

STANDARD INSTRUMENT DEPARTURE CHART (SID) - ICAO

TRANSITION LEVEL by ATC  
TRANSITION ALTITUDE 13000

SION LSGS  
SID RWY 07/25 ONLY FOR DEST  
WITHINTMA LSGG OR LFLB

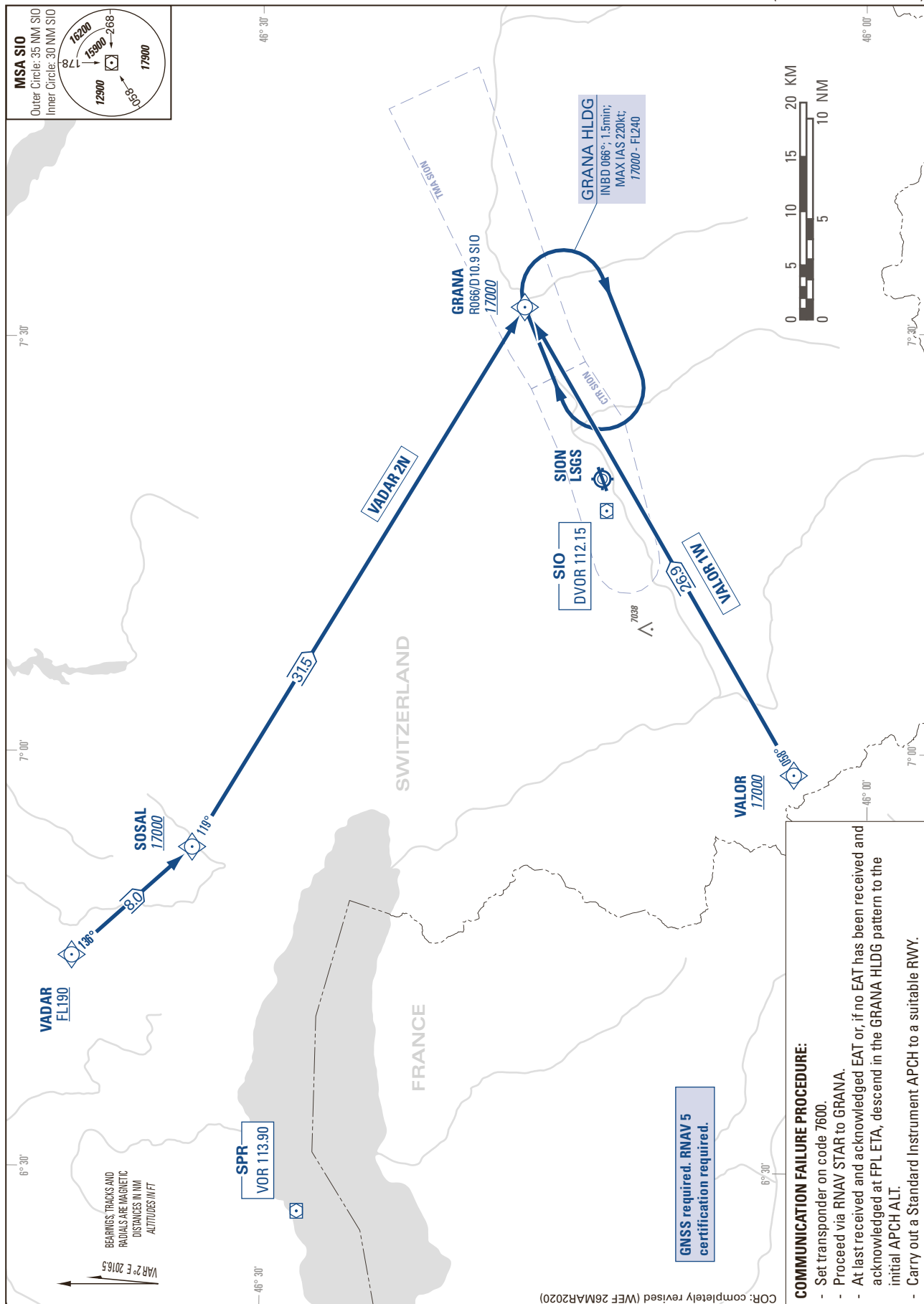


THIS PAGE INTENTIONALLY LEFT BLANK

STANDARD INSTRUMENT ARRIVAL CHART  
(STAR) - ICAO

TRANSITION LEVEL by ATC  
TRANSITION ALTITUDE 17000

SION LSGS  
STAR TO GRANA - RNAV 5  
(DME/DME or GNSS)



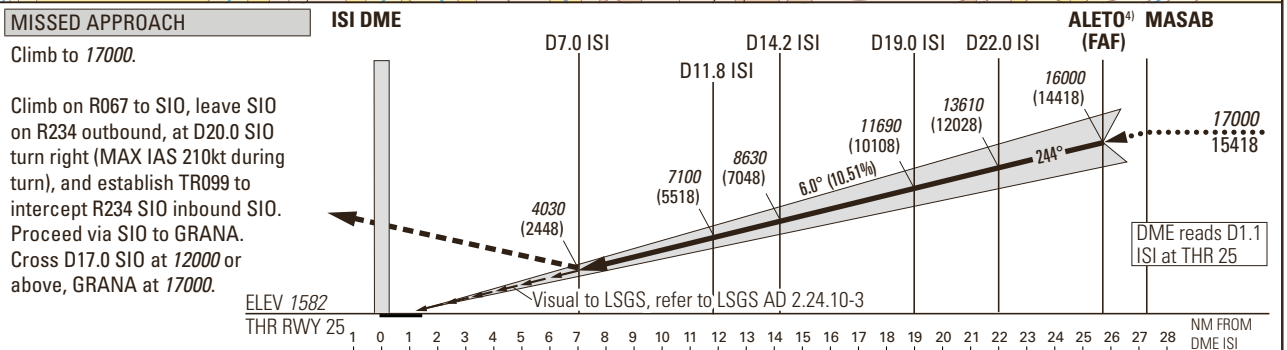
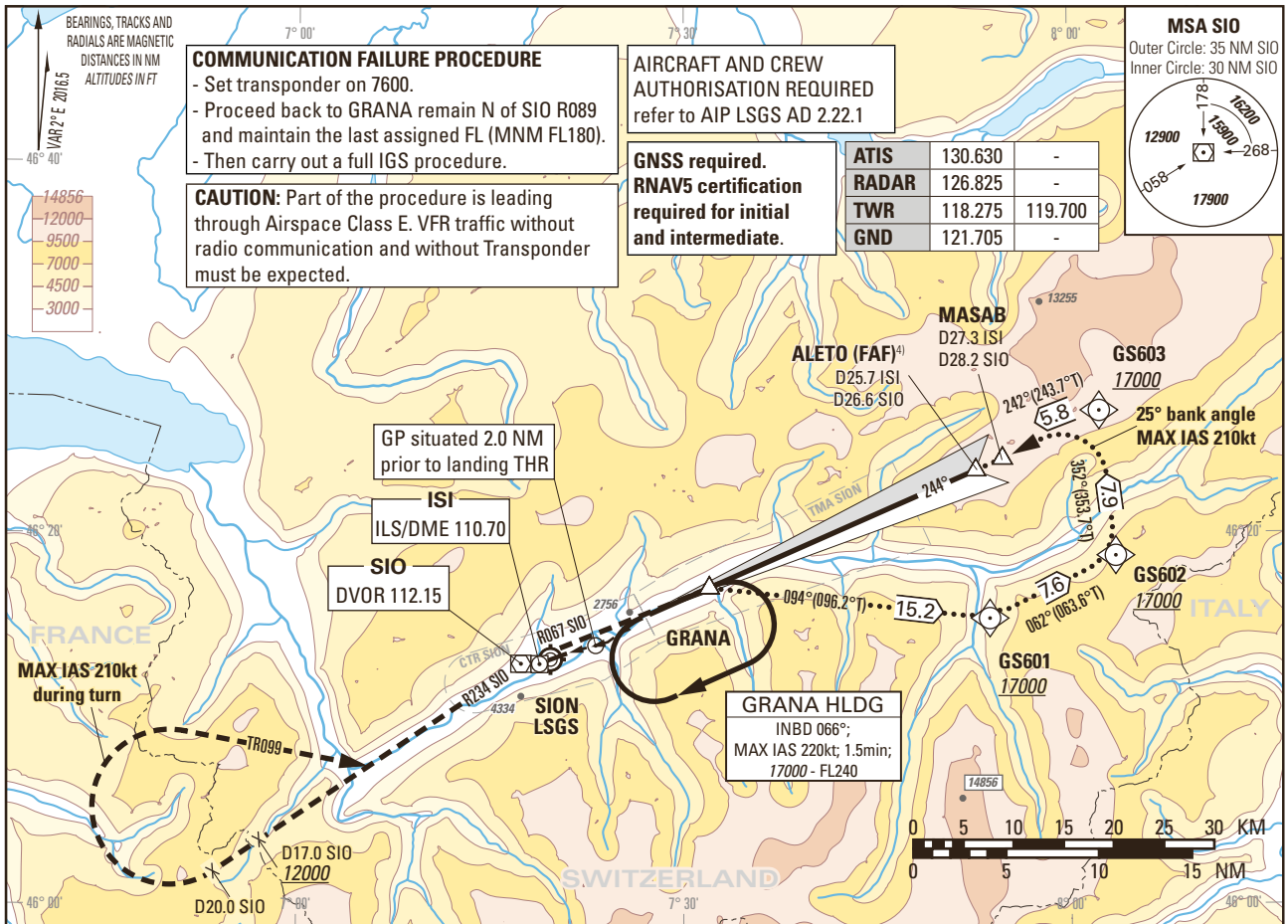
THIS PAGE INTENTIONALLY LEFT BLANK

Instrument Approach Chart  
(IAC) - ICAO  
(IGS instruction: see LSGS AD 2.22)

AD ELEV 1582ft

TRANSITION LEVEL by ATC  
TRANSITION ALTITUDE 17000

SION LSGS  
IGS RWY 25 (ACFT CAT A/B/C)  
OFFSET 6.5° RIGHT  
GLIDE PATH 6.0°, VISUAL PART 4.0°



Missed APCH climb gradient requirement	STRAIGHT-IN APPROACH				VIS m
	A	B	C		
2.5%	6520 (4940) <sup>1)</sup>				5000
3.0%	6080 (4500) <sup>1)</sup>				
3.5%	5650 (4070) <sup>1)</sup>				
4.0%	5220 (3640) <sup>1)</sup>				
4.5%	4780 (3200) <sup>1)</sup>				
4.9%	4490 (2910) <sup>1)</sup>				
Circling north of AD only <sup>1) 2) 3)</sup>	3400 (1820)	5040 (3460)	6060 (4480)		5000
ROD	GS kt	90	110	130	150
	FT/MIN	958	1171	1384	1597

DIST ISI	7	8	9	10	12	14	16
DIST THR	5.9	6.9	7.9	8.9	10.9	12.9	14.9
ALT FT	4030	4670	5310	5950	7220	8500	9780
DIST ISI	18	20	22	24	25	25.7	27.3
DIST THR	16.9	18.9	20.9	22.9	23.9	24.6	26.2
ALT FT	11050	12330	13610	14890	15530	16000	17000

**REMARK**  
- APCH PROHIBITED IF GP U/S.  
- Table for temperature deviation from ISA. See LSGS AD 2.23.2.  
- Final APCH offset 6.5° from RCL.  
- If unable to comply with MAX HLDG speed, inform ATC.

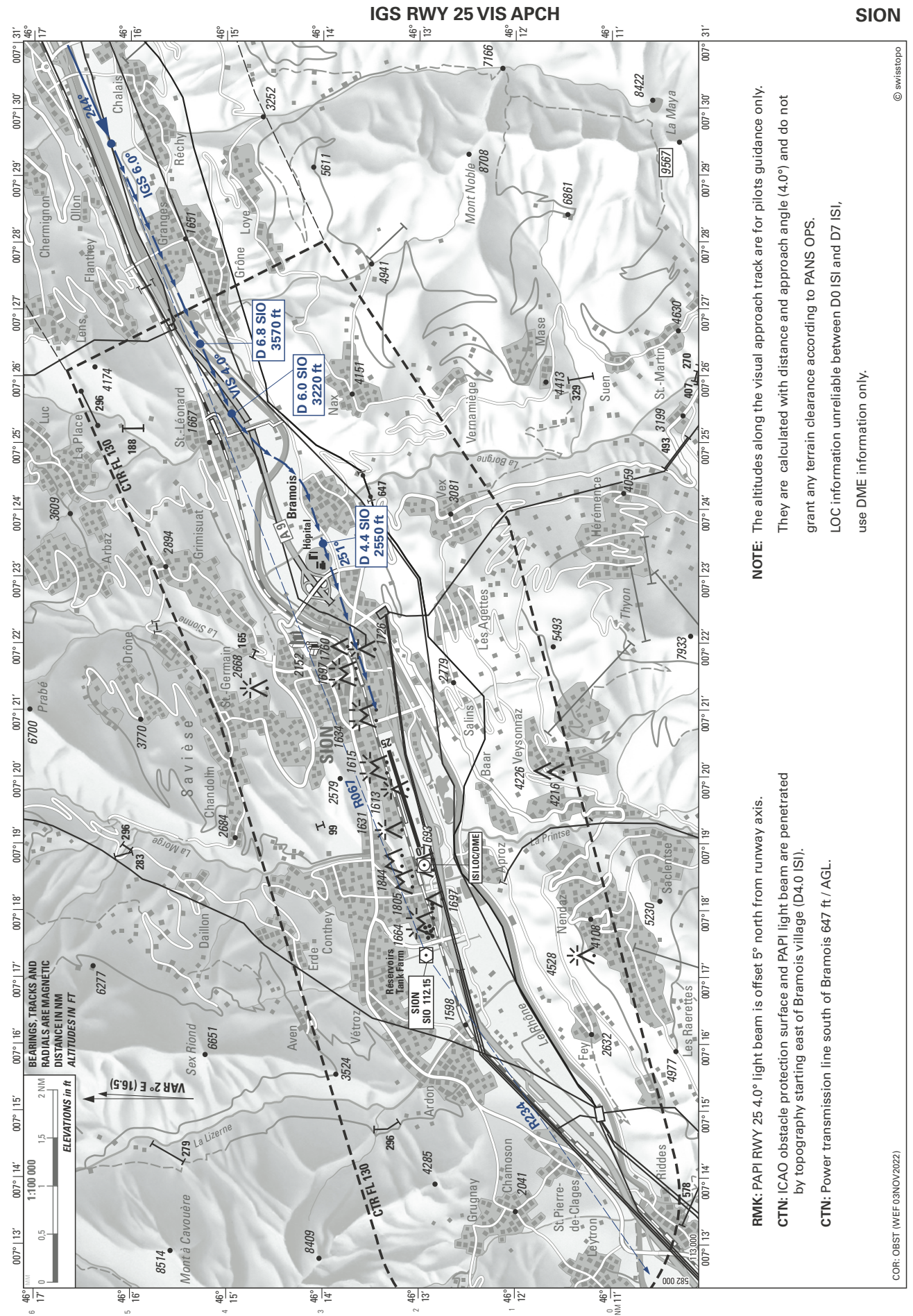
**CAUTION**  
- This is not a standard APCH angle.  
- 3.8 NM BFR THR 25 Visual Segment Surface (VSS) penetrated by OBST up to 4370ft AMSL.

**NOTE**  
<sup>1)</sup> Special training required. <sup>2)</sup> Night circling prohibited. <sup>4)</sup> At ALETO, GP 15970.  
<sup>3)</sup> ACFT categories A, B with speed limit of 125kt and C with speed limit of 135kt.

COR: TWR ALTN FREQ added (WEF 23MAR2023)

THIS PAGE INTENTIONALLY LEFT BLANK





**RMK:** PAPI RWY 25 4.0° light beam is offset 5° north from runway axis.  
**CTN:** ICAO obstacle protection surface and PAPI light beam are penetrated by topography starting east of Bramois village (D4.0 ISI).  
**CTN:** Power transmission line south of Bramois 647 ft / AGL.

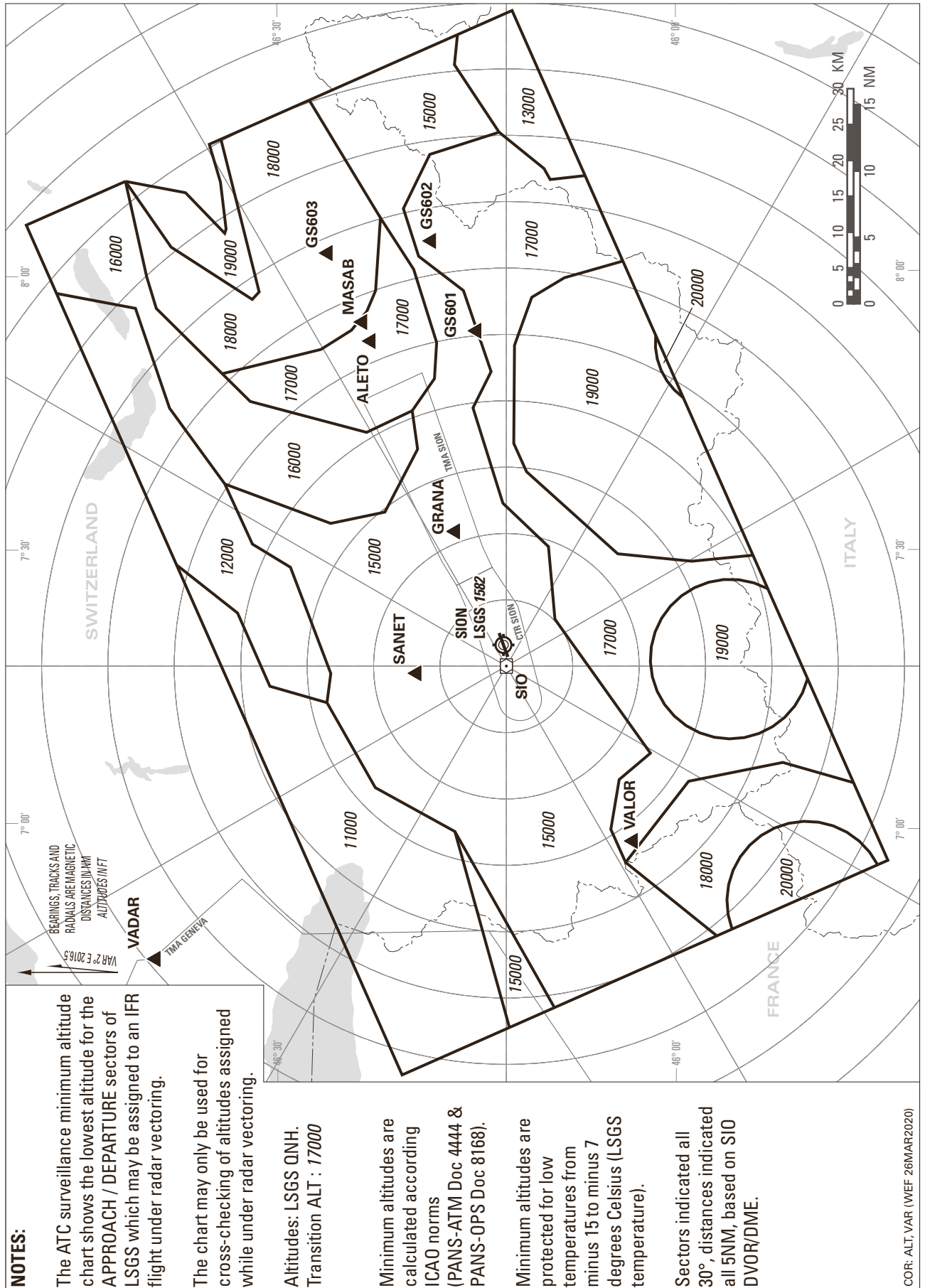
THIS PAGE INTENTIONALLY LEFT BLANK



THIS PAGE INTENTIONALLY LEFT BLANK

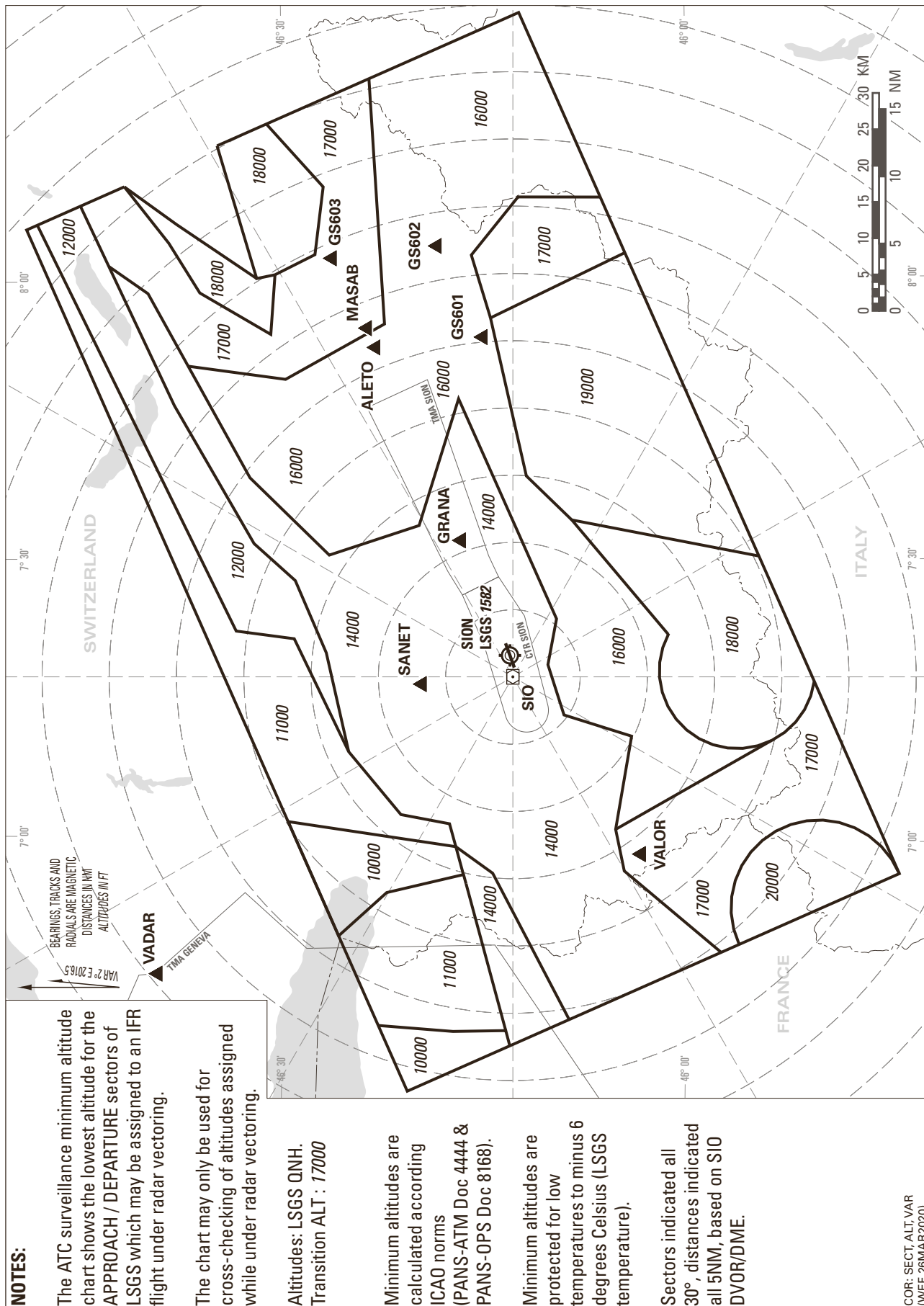


ATC SURVEILLANCE MINIMUM ALTITUDE CHART (ADTEMPERATURES FROM -15°TO -7°C)



THIS PAGE INTENTIONALLY LEFT BLANK

ATC SURVEILLANCE MINIMUM ALTITUDE CHART (ADTEMPERATURES -6°C AND ABOVE)



THIS PAGE INTENTIONALLY LEFT BLANK